

目录

CONTENTS

Page

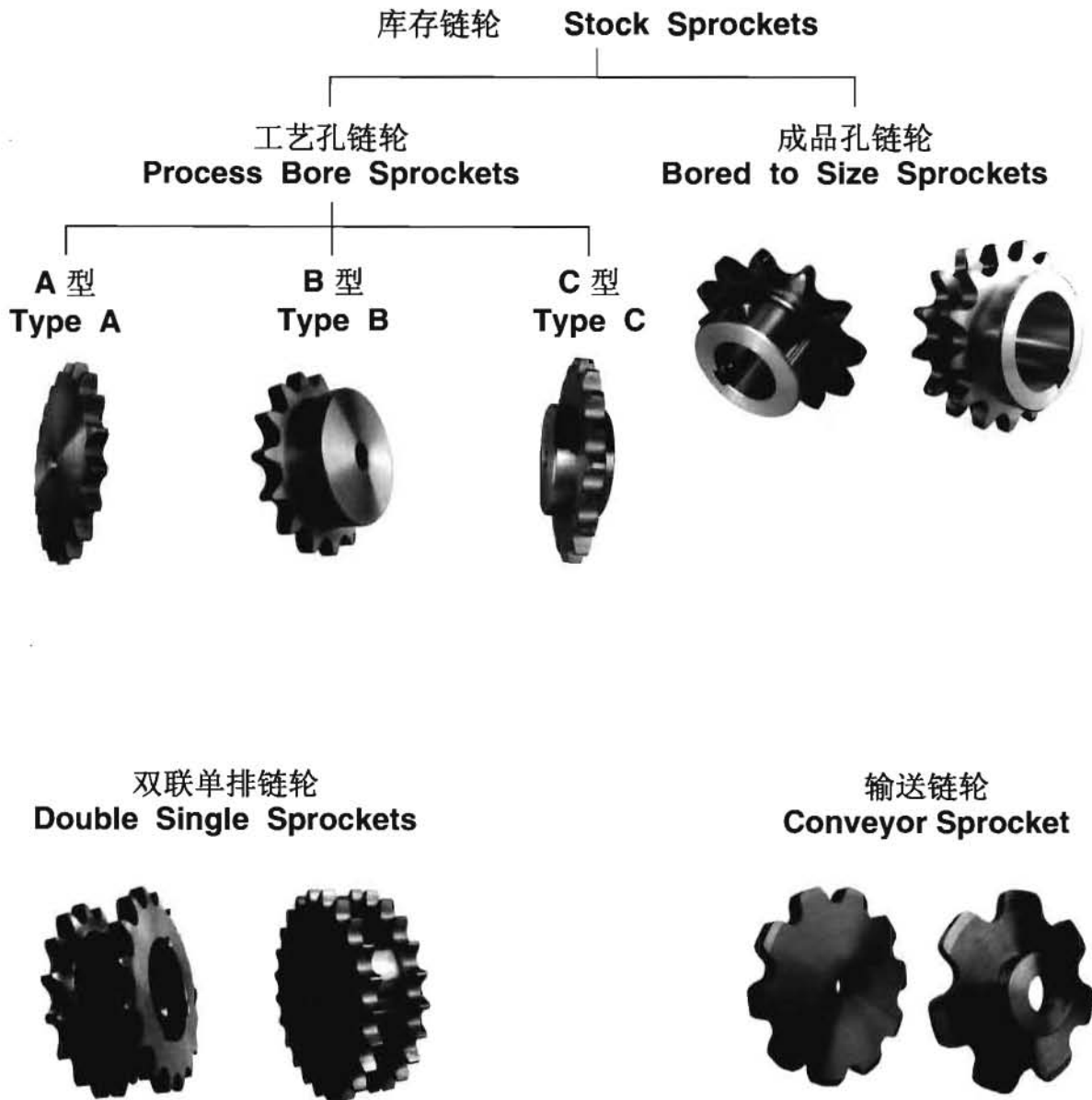
标准链轮的主要型式及标记 Main Type & Marks of Standard Sprockets	1
链轮的轴向齿廓及参数 Wheel-Rim Profiles & Data of Sprockets	4
标准品链轮 Standard Sprockets	5
惰轮 Idler Sprockets	42
平顶链轮 Wheels Table Top	43
单链双排链轮 Single Double Sprockets	44
双节距滚子链链轮 Double-Pitch Roller Chain Sprockets	45
输送链轮 Conveyor Sprockets	47
链条联轴器联轴器 Chain Couplings	50
直齿齿条 Gear Racks	51
同步带轮 Timing Belt Pulleys	52



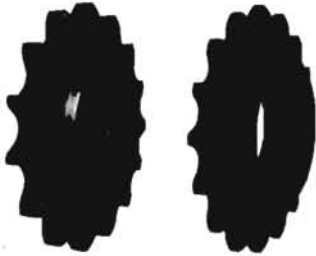
一、链轮的主要型式及标记:

Main Types & Marks of Sprockets.

1. 主要型式 Main Types



惰轮
Idler Sprocket



双节距链轮
Double Pitch Sprocket



齿条
Rack Gear



平顶链轮
Wheels Table Top



同步带轮
Timing Belt Pulleys



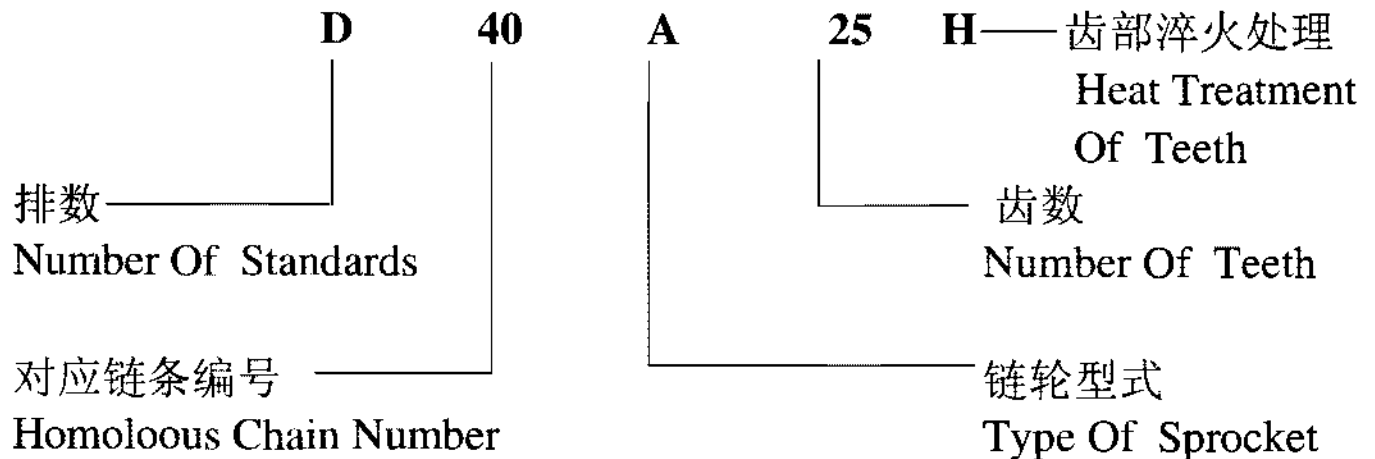
联轴器
Chain Coupling



2. 标记:
Mark

本厂生产的链轮的标记方法为:

Methods for marking sprockets produced by our factory are as follows:



说明:

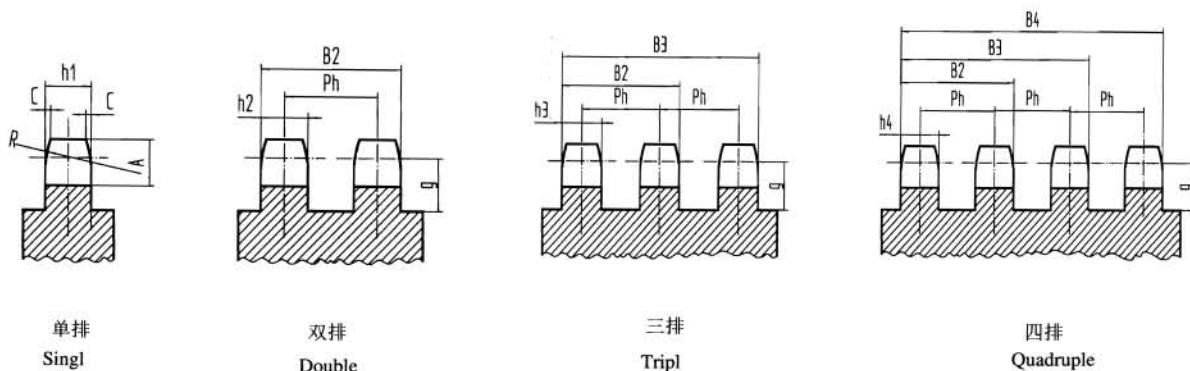
1. 第一个字母表示排数
S—单排 (可省略) D—二排
T—三排 Q—四排
2. “H”表示齿部淬火, 齿部不需
淬火则不标注。
3. 发黑、镀锌等表面处理在标记
上没有作特殊标注。
4. 所有产品的热处理按客户要求。

NOTE:

1. The first character refers to the
number of strands.
S—Single D—Double
T—Triple Q—Quadruple
2. “H” Refers to the heat treatment of
teeth. Sprockets without heat
treatment are not marked.
3. Black oxide, Zinc plating and other
surface treatment is not specifically
noted in marking.
4. We do the heat treatment follow the
request of customer .

二、链轮的轴向齿廓及参数

Wheel-Rim Profiles & Data of Sprockets

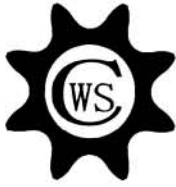


单位 (Dimension) : mm

链轮号 Sprocket NO.	节距 Pitch P	滚子 直径 Roller Dia. Φ	g	倒角高 Height of Chamfer A	倒角宽 Width of Chamfer C	倒角 半径 Radius of Chamfer R	排距 Trans Pitch of Strands Pt.	单排	2排	3排	4排				
								Single	Double	Triple	Quadruple				
							齿厚 Teeth Thick- ness t ₁	齿厚 Teeth Thick- ness t ₂ , t ₃	齿幅 Teeth Width		齿厚 Teeth Thick- ness t ₄	B ₂	B ₃	B ₄	
25	6.35	3.30	4.0	3.2	0.8	6.8	6.4	2.8	2.7	9.1	15.3	2.4	8.8	15.2	21.6
35	9.525	5.80	5.0	4.8	1.2	10.2	10.1	4.3	4.1	14.2	24.4	3.8	13.9	24.0	34.1
410	12.70	7.77	7.0	7.0	1.1	19.2	—	2.8	—	—	—	—	—	—	—
40	12.70	7.92	7.0	6.4	1.6	13.5	14.4	7.2	7.0	21.4	35.8	6.5	20.9	35.3	49.7
50	15.875	10.16	10.3	7.9	2.0	16.9	18.1	8.7	8.4	26.5	44.6	7.9	26.0	44.1	62.2
60	19.05	11.91	11.8	9.5	2.4	20.3	7.0	11.7	11.3	34.1	56.9	10.6	33.4	56.2	79.0
80	25.40	15.88	15.5	12.7	3.2	27.0	29.3	14.5	14.1	43.4	72.7	13.1	42.6	71.9	101.2
100	31.75	19.05	19.2	15.9	4.0	33.8	35.8	17.5	17.0	52.8	88.6	16.0	51.8	87.6	123.4
120	38.10	22.22	23.0	19.1	4.8	40.5	45.4	23.5	22.7	68.1	113.5	21.5	66.9	112.3	157.7
140	44.45	25.40	27.0	22.2	5.6	47.2	48.9	23.5	22.7	71.6	120.5	21.5	70.4	119.3	168.3
160	50.80	28.58	31.6	25.4	6.4	54.0	58.5	29.3	28.4	86.9	145.4	27.0	85.5	144.0	202.5
180	57.15	35.71	36.8	28.5	7.2	61.0	65.8	33.1	32.0	97.8	163.6	30.4	96.2	162.0	227.8
200	63.50	39.67	39.6	31.8	7.9	67.5	71.6	35.3	34.1	105.7	177.3	32.5	104.1	175.7	247.3
240	76.20	47.62	48.5	38.1	9.5	81.0	87.8	44.1	42.7	130.5	218.3	40.7	128.5	216.3	304.1

- 注: 1、g为节圆到凸台(或槽底)的最小距离
2、4排以上的链轮齿厚与4排链轮齿厚t₄相同, 齿幅为B_n=(n-1)Ph+t₄(n≥4)

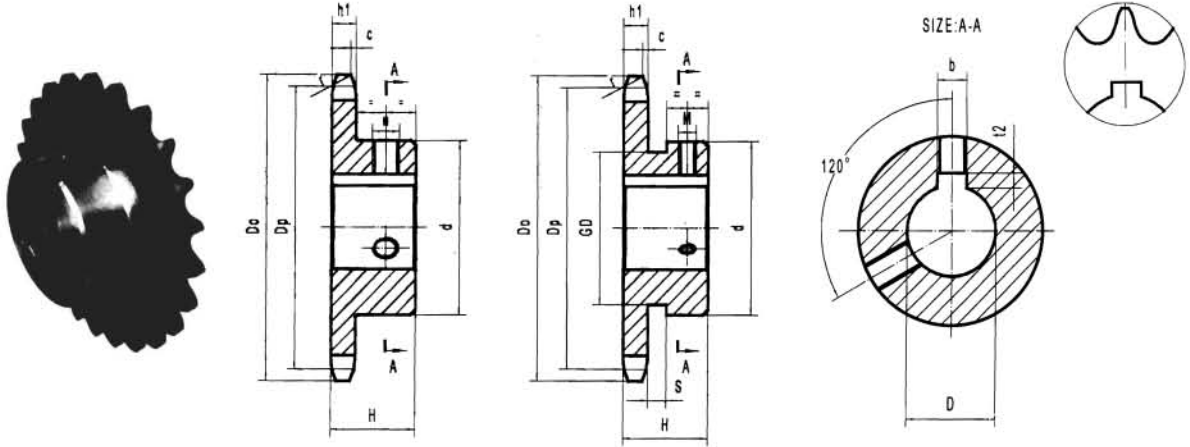
NOTE: 1.g refers to the min distance from pitch circle to hub (or bottom of groove)
2.Teeth thickness of sprocket over quadruple is same as teeth thickness t₄ of quadruple sprocket,teeth
B_n=(n-1)Ph+t₄(n≥4)



NO. 25 STOCK SPROCKETS

— Bored To Size

6.35 Pitch



Single-Type BS

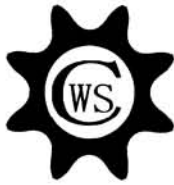
材质(Material):C45 单位(Dimension):mm

齿数 Teeth NO.	外径 D _o	节径 D _p	凸台 Hub		螺孔中心距 a	库存完成孔径 Φ DH7	重量 weight (Kg)
			直径 d	总长 H			
16	36	32.55	25	15	6	10 12	0.06
17	38	34.56	25	15	6	10 12	0.07
18	40	36.57	25	15	6	10 12	0.07
19	42	38.58	28	15	6	10 12	0.08
20	44	40.59	28	15	6	10 12	0.08
21	46	42.61	28	15	6	10 12	0.09
22	48	44.62	30	15	6	12 15	0.10
23	50	46.63	30	15	6	12 15	0.11
24	52	48.65	30	15	6	12 15	0.12
25	54	50.66	35	15	6	12 15 16	0.14
26	56	52.68	35	15	6	12 15 16	0.14
27	58	54.70	35	15	6	12 15 16	0.15
28	60	56.71	35	15	6	12 15 16	0.15
30	64	60.75	35	15	6	12 15 16	0.16
32	68	64.78	40	20	8	15 16 18 20	0.20
34	72	68.82	40	20	8	15 16 18 20	0.21
35	74	70.84	40	20	8	15 16 18 20	0.21
36	76	72.86	40	20	8	15 16 18 20	0.22
38	80	76.90	40	20	8	15 16 18 20	0.26
40	84	80.93	40	20	8	15 16 18 20	0.27

Φ DH7	bxt ²	M
10	3X1.4	4
12	4X1.8	5
14~17	5X2.3	6
18~20	6X2.8	6

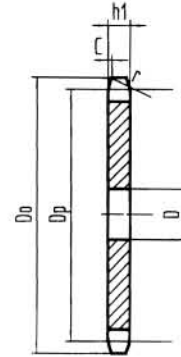
注:
节距 6.35mm
内链节内宽 3.18mm
滚子直径 3.30mm
齿宽 h1 2.8mm

NOTE:
Pitch 6.35mm
internal width 3.18mm
Roller φ 3.30mm
Tooth width h1 2.8mm



NO. 25 STOCK SPROCKETS

6.35 Pitch



Single Type A

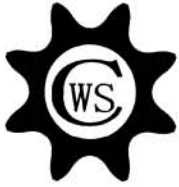
Single-Type A

材质(Material):C45 单位(Dimension):mm

齿数 Teeth NO.	外径 Do	节径 Dp	孔径 D	重量 Weight (Kg)
10	23	20.55	9	0.007
12	28	24.53	9	0.010
13	30	26.53	9	0.011
14	32	28.54	9	0.013
15	34	30.54	9	0.015
16	36	32.55	9	0.018
17	38	34.56	9	0.020
18	40	36.57	9	0.022
20	44	40.59	9	0.028
24	52	48.65	9	0.039
25	54	50.66	9	0.043
27	58	54.70	9	0.050
28	60	56.71	9	0.054
29	62	58.73	9	0.058
30	64	60.75	10	0.062
32	68	64.78	10	0.070
33	70	66.80	10	0.075
35	74	70.84	10	0.084
36	76	72.86	10	0.089
37	78	74.88	10	0.095
38	80	76.90	10	0.100
40	84	80.93	11	0.111
42	89	84.97	11	0.122
45	95	91.03	11	0.140
50	105	101.13	11	0.174
55	115	111.23	11	0.213
60	125	121.33	11	0.251
70	145	141.54	11	0.342
75	155	151.64	12	0.392
80	165	161.74	12	0.446

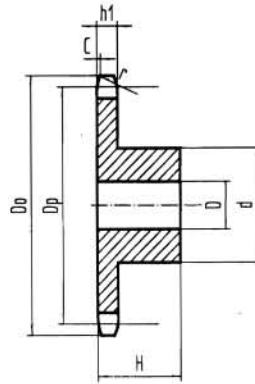
注:
 节距 6.35mm
 内链节内宽 3.18mm
 滚子直径 3.30mm
 齿宽 h1 2.80mm

NOTE:
 Pitch 6.35mm
 internal width 3.18mm
 Roller ϕ 3.30mm
 Tooth width h1 2.80mm



NO. 25 STOCK SPROCKETS

6.35 Pitch



Single Type B

Single-Type B

材质(Material): C45 单位(Dimension):mm

齿数 Teeth NO.	外径 Do	节径 Dp	孔径 D	凸台 Hub		重量 Weight (kg)
				直径 d	总长 H	
10	23	20.55	6.5	14	15	0.03
11	25	22.54	6.5	15	15	0.03
12	28	24.53	7.5	15	15	0.03
13	30	26.53	7.5	18	15	0.05
14	32	28.54	7.5	20	15	0.05
15	34	30.54	7.5	20	15	0.05
16	36	32.55	9.5	25	15	0.06
17	38	34.56	9.5	25	15	0.07
18	40	36.57	9.5	25	15	0.07
19	42	38.58	9.5	28	15	0.08
20	44	40.59	9.5	28	15	0.08
21	46	42.61	9.5	28	15	0.09
22	48	44.62	9.5	30	15	0.10
23	50	46.63	9.5	30	15	0.11
24	52	48.65	9.5	30	15	0.12
25	54	50.66	9.5	35	15	0.14
26	56	52.68	9.5	35	15	0.14
27	58	54.70	9.5	35	15	0.15
28	60	56.71	9.5	35	15	0.15
29	62	58.73	9.5	35	15	0.16
30	64	60.75	9.5	35	15	0.16
31	66	62.77	10.5	40	20	0.20
32	68	64.78	10.5	40	20	0.20
33	70	66.80	10.5	40	20	0.21
34	72	68.82	10.5	40	20	0.21
35	74	70.84	10.5	40	20	0.21
36	76	72.86	10.5	40	20	0.22
37	78	74.88	10.5	40	20	0.26
38	80	76.90	10.5	40	20	0.26
39	82	78.91	10.5	40	20	0.27
40	84	80.93	10.5	40	20	0.27
41	87	82.95	10.5	50	20	0.32
42	89	84.97	10.5	50	20	0.32
43	91	86.99	10.5	50	20	0.40
44	93	89.01	10.5	50	20	0.41
45	95	91.03	10.5	50	20	0.41
48	101	97.09	10.5	50	20	0.43
50	105	101.13	10.5	50	20	0.46
54	113	109.21	10.5	50	20	0.47
60	125	121.33	10.5	50	20	0.52
65	135	131.43	11.5	50	30	0.72
70	145	141.54	11.5	50	30	0.77
75	155	151.64	11.5	50	30	0.82
80	165	161.74	11.5	50	30	0.88

注:
 节距 6.35mm
 内链节内宽 3.18mm
 滚子直径 3.30mm
 齿宽 h1 2.80mm

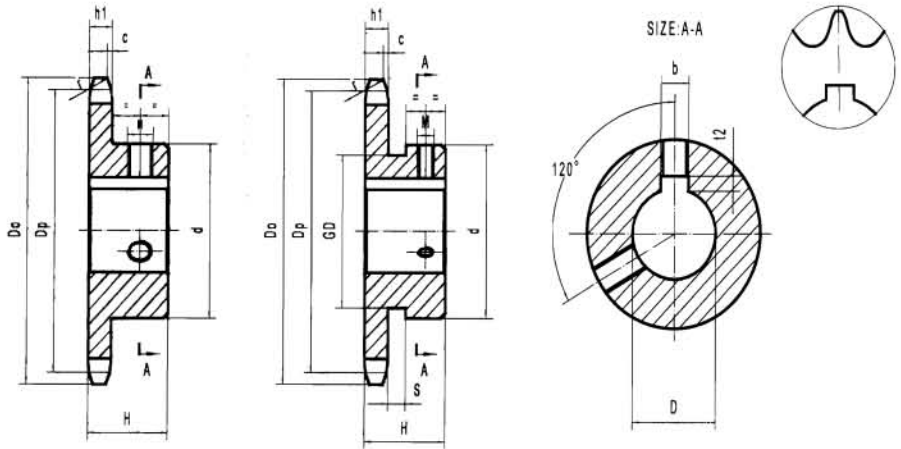
NOTE:
 Pitch 6.35mm
 internal width 3.18mm
 Roller ϕ 3.30mm
 Tooth width h1 2.80mm



NO. 35 STOCK SPROCKETS

—Bored To Size

9.525 Pitch



Single-Type BS

材质(Material):C45 单位(Dimension):mm

齿数 Teeth NO.	外径 Do	节径 Dp	凸台 Hub		螺孔中心距 a	重量 Weight (Kg)	库存完成孔径 ΦDH7
			直径 d	总长 H			
9	32	27.85	*21.5	20	6	0.06	10
10	34	30.82	*24.5	20	6	0.08	10 12
11	38	33.81	*27	20	6	0.09	10 12
12	41	36.80	*30.5	20	6	0.12	10 12 14 15 16 17
13	44	39.80	*32	20	6	0.12	10 12 14 15 16 17
14	47	42.81	32	20	6	0.12	10 12 14 15 16 17
15	51	45.81	35	20	6	0.16	10 12 14 15 16 17 18 19 20
16	54	48.82	37	20	6	0.19	10 12 14 15 16 17 18 19 20 22
17	57	51.84	41	20	6	0.22	12 14 15 16 17 18 19 20 22 24 25
18	60	54.85	44	20	6	0.25	12 14 15 16 17 18 19 20 22 24 25
19	63	57.87	47	20	6	0.28	12 14 15 16 17 18 19 20 22 24 25 28
20	66	60.89	50	20	6	0.32	12 14 15 16 17 18 19 20 22 24 25 28 30
21	69	63.91	53	20	6	0.36	12 14 15 16 17 18 19 20 22 24 25 28 30 32
22	72	66.93	56	20	6	0.37	12 14 15 16 17 18 19 20 22 24 25 28 30 32
23	75	69.95	60	20	6	0.38	12 14 15 16 17 18 19 20 22 24 25 28 30 32
24	78	72.97	53	22	8	0.43	12 14 15 16 17 18 19 20 22 24 25 28 30 32
25	81	76.00	53	22	8	0.44	15 16 17 18 19 20 22 24 25 28 30 32
26	84	79.02	53	22	8	0.45	15 16 17 18 19 20 22 24 25 28 30 32
27	87	82.05	53	22	8	0.46	15 16 17 18 19 20 22 24 25 28 30 32
28	90	85.07	53	22	8	0.48	15 16 17 18 19 20 22 24 25 28 30 32
29	93	88.10	53	22	8	0.49	
30	96	91.12	53	22	8	0.51	15 16 17 18 19 20 22 24 25 28 30 32
31	99	94.15	53	22	8	0.53	
32	102	97.18	53	22	8	0.54	17 16 17 18 19 20 22 24 25 28 30 32
33	105	100.20	53	22	8	0.56	
34	109	103.23	53	22	8	0.57	15 16 17 18 19 20 22 24 25 28 30 32
35	112	106.26	53	22	8	0.59	16 16 17 18 19 20 22 24 25 28 30 32
36	115	109.29	53	22	8	0.61	17 16 17 18 19 20 22 24 25 28 30 32
37	118	112.31	63	25	10	0.80	
38	121	115.34	63	25	10	0.82	20 22 24 25 28 30 32 35 38
39	124	118.37	63	25	10	0.84	
40	127	121.40	63	25	10	0.85	20 22 24 25 28 30 32 35 38

ΦD ^{H7}	bxt ²	M
10	3×1.4	4
12	4×1.8	5
14~17	5×2.3	6
18~22	6×2.8	6
24~30	8×3.3	8
32~35	10×3.3	8

齿数 Teeth NO.	S	GD
9		17
10		20
11	4.4	23
12		26
13		29

齿数 Teeth NO.	ΦD ^{H7}	M
17	25	6

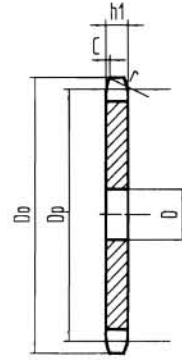
注:
 节距 9.525mm
 内链节内宽 4.78mm
 滚子直径 5.08mm
 齿宽 h1 4.3mm

NOTE:
 Pitch 9.525mm
 internal width 4.78mm
 Roller φ 5.08mm
 Tooth width h1 4.3mm



NO. 35 STOCK SPROCKETS

9.525 Pitch



Single Type A

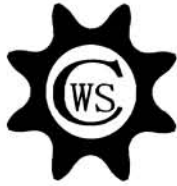
Single-Type A

材质(Material): C45 单位(Dimension):mm

齿数 Teeth NO.	外径 Do	节径 Dp	孔径 D	重量 Weight (Kg)
10	34	30.82	9	0.02
11	38	33.81	9	0.03
12	41	36.80	9	0.03
13	44	39.80	9	0.04
14	47	42.81	9	0.04
15	51	45.81	9	0.05
16	54	48.82	9	0.05
17	57	51.84	11	0.07
18	60	54.85	11	0.07
19	63	57.87	11	0.09
20	66	60.89	11	0.09
21	69	63.91	11	0.11
22	72	66.93	11	0.11
23	75	69.95	11	0.11
24	78	72.97	11	0.14
25	81	76.00	11	0.16
26	84	79.02	11	0.16
27	87	82.05	11	0.17
28	90	85.07	11	0.18
30	96	91.12	11	0.23
32	102	97.18	11	0.27
33	105	100.20	11	0.28
34	109	103.23	11	0.29
35	112	106.26	11	0.30
36	115	109.29	12	0.32
38	121	115.34	12	0.37
40	127	121.40	12	0.40
42	133	127.46	16	0.43
45	142	136.55	16	0.49
46	145	139.58	16	0.51
48	151	145.64	16	0.55
50	157	151.70	16	0.60
54	169	163.81	16	0.70
55	172	166.85	16	0.71
60	187	182.00	16	0.80
65	203	197.15	16	1.02
70	218	212.30	16	1.18
80	248	242.61	16	1.50

注:
 节距 9.525mm
 内链节内宽 4.78mm
 滚子直径 5.08mm
 齿宽 h1 4.3mm

NOTE:
 Pitch 9.525mm
 internal width 4.78mm
 Roller ϕ 5.08mm
 Tooth width h1 4.3mm



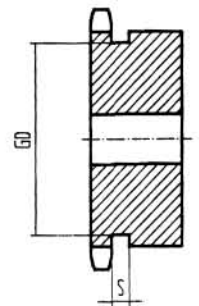
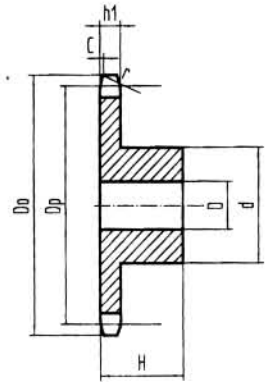
NO. 35 STOCK SPROCKETS

9.525 Pitch

Single-Type B

材质(Material): C45 单位(Dimension):mm

齿数 Teeth NO.	外径 Do	节径 Dp	孔径 D	凸台 Hub		重量 Weight (Kg)
				直径 d	总长 H	
8	29	24.89	8.5	*18.5	20	0.06
9	32	27.85	8.5	*21.5	20	0.06
10	34	30.82	8.5	*24.5	20	0.08
11	38	33.81	9.5	*27	20	0.09
12	41	36.80	9.5	*30.5	20	0.12
13	44	39.80	9.5	*32	20	0.12
14	47	42.81	9.5	32	20	0.12
15	51	45.81	9.5	35	20	0.16
16	54	48.82	9.5	37	20	0.19
17	57	51.84	11.5	41	20	0.22
18	60	54.85	11.5	44	20	0.25
19	63	57.87	11.5	47	20	0.28
20	66	60.89	11.5	50	20	0.32
21	69	63.91	11.5	53	20	0.36
22	72	66.93	11.5	56	20	0.37
23	75	69.95	11.5	60	20	0.38
24	78	72.97	11.5	53	22	0.43
25	81	76.00	11.5	53	22	0.44
26	84	79.02	11.5	53	22	0.45
27	87	82.05	11.5	53	22	0.46
28	90	85.07	11.5	53	22	0.48
29	93	88.10	11.5	53	22	0.49
30	96	91.12	11.5	53	22	0.51
31	99	94.15	11.5	53	22	0.53
32	102	97.18	11.5	53	22	0.54
33	105	100.20	11.5	53	22	0.56
34	109	103.23	11.5	53	22	0.57
35	112	106.26	11.5	53	22	0.59
36	115	109.29	12.5	53	22	0.61
37	118	112.31	12.5	63	25	0.80
38	121	115.34	12.5	63	25	0.82
39	124	118.37	12.5	63	25	0.84
40	127	121.40	12.5	63	25	0.85
41	130	124.43	16	63	25	0.91
42	133	127.46	16	63	25	0.93
43	136	130.49	16	63	25	0.95
44	139	133.52	16	63	25	0.97
45	142	136.55	16	63	25	1.00
46	145	139.58	16	63	25	1.01
47	148	142.61	16	63	25	1.03
48	151	145.64	16	63	25	1.05
50	157	151.70	16	63	25	1.07
53	166	160.78	16	63	25	1.09
54	169	163.81	16	63	25	1.10
55	172	166.85	16	63	25	1.25
60	187	182.00	16	63	25	1.30
64	200	194.12	16	63	25	1.46
65	203	197.15	16	68	25	1.67
70	218	212.30	16	68	25	1.80
75	233	227.46	16	68	25	1.90
80	248	242.61	16	68	25	2.40

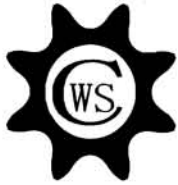


Single Type B

齿数 Teeth NO.	S	GD
8		14
9		17
10	4.4	20
11		23
12		26
13		29

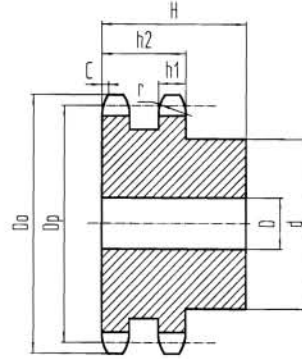
注:
 节距 9.525mm
 内链节内宽 4.78mm
 滚子直径 5.08mm
 齿宽 h1 4.3mm

NOTE:
 Pitch 9.525mm
 internal width 4.78mm
 Roller ϕ 5.08mm
 Tooth width h1 4.3mm



NO. 35 STOCK SPROCKETS

9.525 Pitch



Double Type B

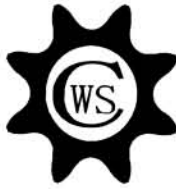
Double-Type B

材质(Material): C45 单位(Dimension):mm

齿数 Teeth NO.	外径 Do	节径 Dp	孔径 D	凸台 Hub		重量 Weight (Kg)
				直径 d	总长 H	
10	34	30.82	9	20	30	0.10
11	38	33.81	10	23	30	0.11
12	41	36.80	10	26	30	0.14
13	44	39.80	10	27	30	0.17
14	47	42.80	10	32	30	0.21
15	51	45.81	10	35	30	0.25
16	54	48.82	10	38	30	0.29
17	57	51.84	11.5	41	30	0.34
18	60	54.85	11.5	44	35	0.45
19	63	57.87	11.5	47	35	0.51
20	66	60.89	12	50	40	0.64
21	69	63.91	12	50	40	0.64
22	72	66.93	12	55	40	0.67
24	78	72.97	15	60	40	0.82
25	81	76.00	15	60	40	0.92
28	90	85.07	15	65	45	1.26
30	96	91.12	15	65	45	1.34
32	102	97.18	15	65	45	1.43
40	127	121.40	15	65	45	2.30
45	142	136.55	19	83	45	2.84
50	157	151.70	19	83	45	3.22
60	187	182.00	19	93	50	4.70

注:
 节距 9.525mm
 内链节内宽 4.78mm
 滚子直径 5.08mm
 齿宽 h1 4.1mm
 齿宽 h2 14.2mm

NOTE:
 Pitch 9.525mm
 internal width 4.78mm
 Roller ϕ 5.08mm
 Tooth width h1 4.1mm
 Tooth width h2 14.2mm



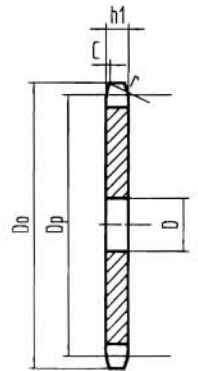
NO. 410 STOCK SPROCKETS

12.7 Pitch

Single-Type A

材质(Material): C45 单位(Dimension):mm

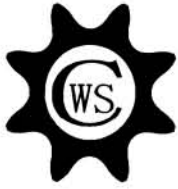
齿数 Teeth NO.	外径 Do	节径 Dp	孔径 D	重量 Weight (Kg)
8	38	33.19	10	0.01
9	42	37.13	10	0.02
10	46	41.10	11	0.05
11	51	45.08	12	0.09
12	55	49.07	12	0.10
13	59	53.07	15	0.12
14	63	57.07	15	0.14
15	67	61.08	15	0.16
16	71	65.10	15	0.18
17	76	69.12	15	0.20
18	80	73.14	15	0.23
19	84	77.16	15	0.26
20	88	81.18	16	0.29
21	92	85.21	16	0.30
22	96	89.24	16	0.35
23	100	93.27	16	0.38
24	104	97.30	16	0.40
25	108	101.33	16	0.45
26	112	105.36	16	0.49
27	116	109.40	16	0.50
28	120	113.43	16	0.56
29	124	117.46	16	0.60
30	128	121.50	16	0.63
31	133	125.53	16	0.65
32	137	129.57	16	0.70
33	141	133.61	16	0.75
34	145	137.64	16	0.80
35	149	141.68	16	0.85
36	153	145.72	18	0.90
37	157	149.75	18	0.99
38	161	153.79	18	1.00
39	165	157.83	18	1.15
40	169	161.87	18	1.20
41	173	165.91	18	1.20
42	177	169.94	18	1.25
44	185	178.02	18	1.35
45	189	182.06	18	1.40
46	193	186.10	18	1.49
47	197	190.14	18	1.58
48	201	194.18	18	1.63
49	205	198.22	18	1.73
50	209	202.26	18	1.80
52	218	210.34	18	1.93
54	226	218.42	18	2.00
60	250	242.66	18	2.60



Single Type A

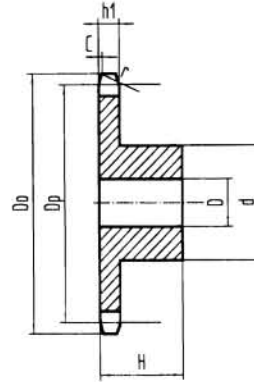
注:
 节距 12.7mm
 内链节内宽 3.4mm
 滚子直径 7.75mm
 齿宽 h1 2.8mm

NOTE:
 Pitch 12.7mm
 internal width 3.4mm
 Roller ϕ 7.75mm
 Tooth width h1 2.8mm



NO. 410 STOCK SPROCKETS

12.7 Pitch



Single Type B

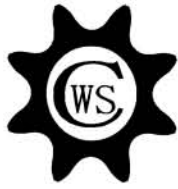
Single-Type B

材质(Material): C45 单位(Dimension):mm

齿数 Teeth NO.	外径 Do	节径 Dp	孔径 D	凸台 Hub		重量 Weight (Kg)
				直径 d	总长 H	
10	46	41.10	9.5	28	20	0.14
11	51	45.08	10.5	30	20	0.19
12	55	49.07	11.5	34	20	0.22
13	59	53.07	13.5	38	20	0.23
14	63	57.07	13.5	42	20	0.28
15	67	61.08	13.5	46	20	0.34
16	71	65.10	13.5	50	20	0.40
17	76	69.12	13.5	54	22	0.46
18	80	73.14	13.5	57	22	0.51
19	84	77.16	13.5	62	22	0.59
20	88	81.18	14	67	25	0.76
21	92	85.21	14	71	25	0.85
22	96	89.24	14	75	25	0.95
23	100	93.27	14	77	25	1.00
24	104	97.30	14	63	25	0.84
25	108	101.33	14	63	25	0.88
26	112	105.33	14	63	25	0.92
27	116	109.40	14	63	25	0.96
28	120	113.43	14	63	25	1.00
29	124	117.46	14	63	25	1.00
30	128	121.50	14	63	25	1.10
32	137	129.57	14	68	28	1.30
34	145	137.64	14	68	28	1.30
35	149	141.68	14	68	28	1.40
36	153	145.72	16	68	28	1.50
40	169	161.87	16	68	28	1.70

注:
 节距 12.7mm
 内链节内宽 3.4mm
 滚子直径 7.75mm
 齿宽 h1 2.8mm

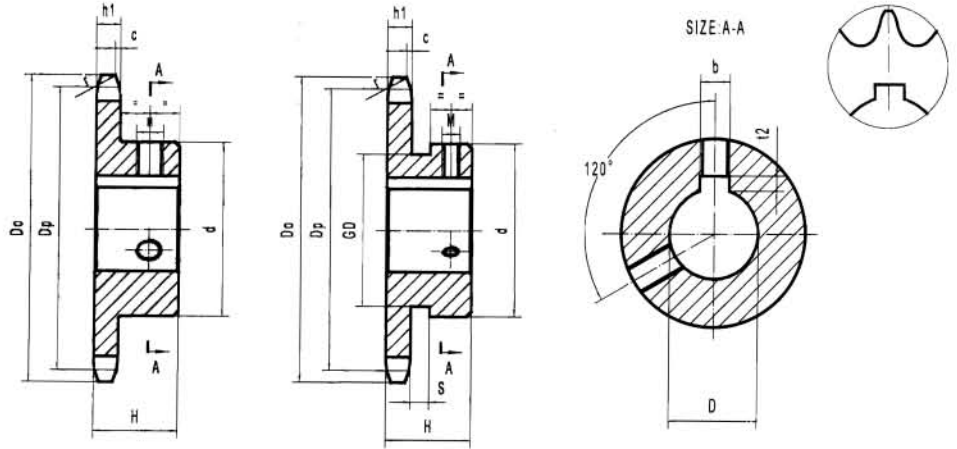
NOTE:
 Pitch 12.7mm
 internal width 3.4mm
 Roller φ 7.75mm
 Tooth width h1 2.8mm



NO. 40 STOCK SPROCKETS

—Bored To Size

12.7 Pitch



Single-Type BS

材质(Material):C45 单位(Dimension):mm

齿数 Teeth NO.	外径 Do	节径 Dp	凸台 Hub		螺孔中心距 a	重量 Weight (Kg)	库存完成孔径 ΦD ^{H7}
			直径 d	总长 H			
9	42	37.13	*28	22	5	0.11	10 12 14
10	46	41.10	*32	22	5	0.14	10 12 14 15 16 17
11	51	45.08	*36	22	5	0.19	10 12 14 15 16 17 18 19 20
12	55	49.07	*40	22	5	0.22	10 12 14 15 16 17 18 19 20 22
13	59	53.07	37	22	6	0.23	12 14 15 16 17 18 19 20
14	63	57.07	42	22	6	0.28	12 14 15 16 17 18 19 20 22 24 25
15	67	61.08	46	22	6	0.34	12 14 15 16 17 18 19 20 22 24 25 28 30
16	71	65.10	50	22	6	0.40	12 14 15 16 17 18 19 20 22 24 25 28 30 32
17	76	69.12	54	22	6	0.46	12 14 15 16 17 18 19 20 22 24 25 28 30 32 35
18	80	73.14	57	22	6	0.51	12 14 15 16 17 18 19 20 22 24 25 28 30 32 35
19	84	77.16	62	22	6	0.59	12 14 15 16 17 18 19 20 22 24 25 28 30 32 35 38 40
20	88	81.18	67	25	7	0.76	12 14 15 16 17 18 19 20 22 24 25 28 30 32 35 38 40 42
21	92	85.21	71	25	7	0.85	14 15 16 17 18 19 20 22 24 25 28 30 32 35 38 40 42 45
22	96	89.24	75	25	7	0.95	14 15 16 17 18 19 20 22 24 25 28 30 32 35 38 40 42 45
23	100	93.27	77	25	7	1.00	14 15 16 17 18 19 20 22 24 25 28 30 32 35 38 40 42 45
24	104	97.30	63	25	7	0.84	14 15 16 17 18 19 20 22 24 25 28 30 32 35 38 40 42
25	108	101.33	63	25	7	0.88	14 15 16 17 18 19 20 22 24 25 28 30 32 35 38 40 42
26	112	105.36	63	25	7	0.92	14 15 16 17 18 19 20 22 24 25 28 30 32 35 38 40 42
27	116	109.40	63	25	7	0.96	14 15 16 17 18 19 20 22 24 25 28 30 32 35 38 40 42
28	120	113.43	63	25	7	1.00	14 15 16 17 18 19 20 22 24 25 28 30 32 35 38 40 42
29	124	117.46	63	25	7	1.00	25
30	128	121.50	63	25	7	1.10	14 15 16 17 18 19 20 22 24 25 28 30 32 35 38 40 42
31	133	125.53	68	28	10	1.20	
32	137	129.57	68	28	10	1.30	20 22 24 25 28 30 32 35 40
33	141	133.61	68	28	10	1.30	
34	145	137.64	68	28	10	1.30	20 22 24 25 28 30 32 35 40
35	149	141.68	68	28	10	1.40	20 22 24 25 28 30 32 35 40
36	153	145.72	68	28	10	1.50	20 22 24 25 28 30 32 35 40
37	157	149.75	68	28	10	1.55	35
38	161	153.79	68	28	10	1.60	24 25 28 30 32 35 40
39	165	157.83	68	28	10	1.65	
40	169	161.87	68	28	10	1.70	25 28 30 32 35 40

齿数 Teeth NO.	ΦD ^{H7}	M
14	25	6
15	30	6

齿数 Teeth NO.	S	GD
9		23
10	5.2	27
11		31
12		35

ΦD ^{H7}	bxt ²	M
10	3×1.4	4
12	4×1.8	5
14~17	5×2.3	6
18~22	6×2.8	6
24~30	8×3.3	8
32~38	10×3.3	8
40~42	12×3.3	8
45	14×3.8	10

注:
 节距 12.7mm
 内链节内宽 7.95mm
 滚子直径 7.95mm
 齿宽 h1 7.2mm

NOTE:
 Pitch 12.7mm
 internal width 7.95mm
 Roller φ 7.95mm
 Tooth width h1 7.2mm



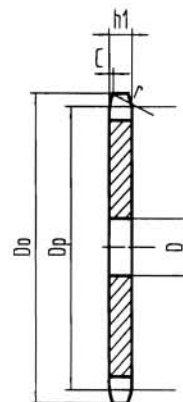
NO. 40 STOCK SPROCKETS

12.7 Pitch

Single-Type A

材质(Material): C45 单位(Dimension):mm

齿数 Teeth NO.	外径 Do	节径 Dp	孔径 D	重量 Weight (Kg)
10	46	41.10	9.5	0.05
11	51	45.08	10.5	0.09
12	55	49.07	11.5	0.10
13	59	53.07	13.5	0.12
14	63	57.07	13.5	0.14
15	67	61.08	13.5	0.16
16	71	65.10	13.5	0.18
17	76	69.12	13.5	0.20
18	80	73.14	13.5	0.23
19	84	77.16	13.5	0.26
20	88	81.18	14	0.29
21	92	85.21	14	0.30
22	96	89.24	14	0.35
23	100	93.27	14	0.38
24	104	97.30	14	0.40
25	108	101.33	14	0.45
26	112	105.36	14	0.49
27	116	109.40	14	0.50
28	120	113.43	14	0.56
29	124	117.46	14	0.60
30	128	121.50	14	0.63
31	133	125.53	14	0.65
32	137	129.57	14	0.70
33	141	133.61	14	0.75
34	145	137.64	14	0.80
35	149	141.68	14	0.85
36	153	145.72	16	0.90
37	157	149.75	16	0.99
38	161	153.79	16	1.00
39	165	157.83	16	1.15
40	169	161.87	16	1.20
41	173	165.91	16	1.20
42	177	169.95	16	1.25
43	181	173.98	16	1.30
44	185	178.02	16	1.35
45	189	182.06	16	1.40
46	193	186.10	16	1.49
47	197	190.14	16	1.58
48	201	194.18	16	1.63
49	205	198.22	16	1.73
50	209	202.26	16	1.80
51	214	206.30	16	1.88
52	218	210.34	16	1.93
53	222	214.38	16	1.98
54	226	218.42	16	2.00
55	230	222.46	16	2.18
56	234	226.50	16	2.26
58	242	234.58	16	2.43
59	246	238.62	16	2.51
60	250	242.66	16	2.60
62	258	250.74	16	2.77
64	266	258.83	16	2.90
65	270	262.87	16	3.00
68	282	274.99	16	3.35
70	290	283.07	16	3.50
72	299	291.16	20	3.70
75	311	303.28	20	4.00
80	331	323.49	20	4.60
85	351	343.69	20	5.20
90	371	363.90	20	5.80



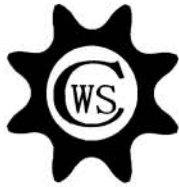
Single Type A

注:

节距 12.7mm
 内链节内宽 7.95mm
 滚子直径 7.95mm
 齿宽 h1 7.2mm

NOTE:

Pitch 12.7mm
 internal width 7.95mm
 Roller ϕ 7.95mm
 Tooth width h1 7.2mm



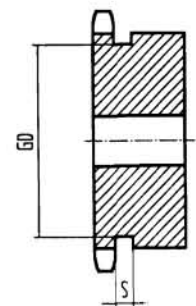
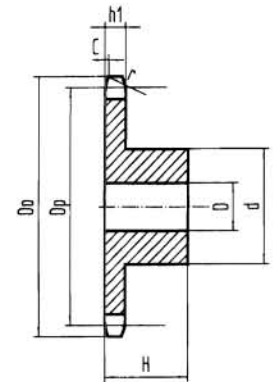
NO. 40 STOCK SPROCKETS

12.7 Pitch

Single-Type B

材质(Material): C45 单位(Dimension):mm

齿数 Teeth NO.	外径 Do	节径 Dp	孔径 D	凸台 Hub		重量 Weight (Kg)
				直径 d	总长 H	
8	38	33.19	8.5	*24	22	0.10
9	42	37.13	8.5	*28	22	0.11
10	46	41.10	9.5	*32	22	0.14
11	51	45.08	10.5	*36	22	0.19
12	55	49.07	11.5	*40	22	0.22
13	59	53.07	13.5	37	22	0.23
14	63	57.07	13.5	42	22	0.28
15	67	61.08	13.5	46	22	0.34
16	71	65.10	13.5	50	22	0.40
17	76	69.12	13.5	54	22	0.46
18	80	73.14	13.5	57	22	0.51
19	84	77.16	13.5	62	22	0.59
20	88	81.18	14	67	25	0.76
21	92	85.21	14	71	25	0.85
22	96	89.24	14	75	25	0.95
23	100	93.27	14	77	25	1.00
24	104	97.30	14	63	25	0.84
25	108	101.33	14	63	25	0.88
26	112	105.36	13	63	25	0.92
27	116	109.40	13	63	25	0.96
28	120	113.43	13	63	25	1.00
29	124	117.46	13	63	25	1.00
30	128	121.50	13	63	25	1.10
31	133	125.53	14	68	28	1.20
32	137	129.57	14	68	28	1.30
33	141	133.61	14	68	28	1.30
34	145	137.64	14	68	28	1.30
35	149	141.68	14	68	28	1.40
36	153	145.72	16	68	28	1.50
37	157	149.75	16	68	28	1.55
38	161	153.79	16	68	28	1.60
39	165	157.83	16	68	28	1.65
40	169	161.87	16	68	28	1.70
41	173	165.91	16	73	32	2.00
42	177	169.95	16	73	32	2.05
43	181	173.98	16	73	32	2.10
44	185	178.02	16	73	32	2.17
45	189	182.06	16	73	32	2.25
46	193	186.10	16	73	32	2.30
47	197	190.14	16	73	32	2.37
48	201	194.18	16	73	32	2.45
49	205	198.22	16	73	32	2.51
50	209	202.26	16	73	32	2.60
51	214	206.30	16	73	32	2.65
52	218	210.34	16	73	32	2.72
53	222	214.38	16	73	32	2.80
54	226	218.42	16	73	32	2.90
55	230	222.46	16	73	32	2.96
56	234	226.50	16	73	32	3.04
60	250	242.66	16	73	32	3.40
64	266	258.83	16	73	32	3.73
65	270	262.87	16	83	32	4.10
68	282	274.99	16	83	32	4.35
70	290	283.07	16	83	32	4.57
72	299	291.16	20	83	32	4.80
75	311	303.28	20	83	32	5.10
80	331	323.49	20	88	35	5.90
85	351	343.69	20	88	35	6.50
90	371	363.90	20	88	35	7.15



Single Type B

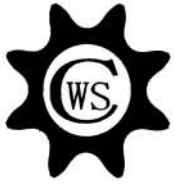
注:

节距 12.7mm
内链节内宽 7.95mm
滚子直径 7.95mm
齿宽 h1 7.2mm

NOTE:

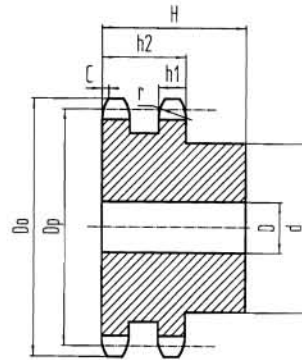
Pitch 12.7mm
internal 7.95mm
Roller ϕ 7.95mm
Tooth width h1 7.2mm

齿数 Teeth NO.	S	GD
8		18
9		23
10	5.2	27
11		31
12		35



NO. 40 STOCK SPROCKETS

12.7 Pitch



Double Type B

Double-Type B

材质(Material): C45 单位(Dimension):mm

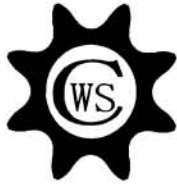
齿数 Teeth NO.	外径 Do	节径 Dp	孔径 D	凸台 Hub		重量 Weight (Kg)
				直径 d	总长 H	
10	46	41.10	13	28	35	0.28
11	51	45.08	13	30	35	0.30
12	55	49.07	14	35	35	0.34
13	59	53.07	14	39	35	0.40
14	63	57.07	14	43	35	0.47
15	67	61.08	14	47	35	0.55
16	71	65.10	14	50	35	0.65
17	76	69.12	14	54	35	0.75
18	80	73.14	14	59	35	0.85
19	84	77.16	14	63	35	0.98
20	88	81.18	14	67	40	1.30
21	92	85.21	14	68	40	1.30
22	96	89.24	14	72	40	1.50
23	100	93.27	14	76	40	1.60
24	104	97.30	14	80	40	1.80
25	108	101.33	18	84	40	2.00
26	112	105.36	18	88	40	2.20
27	116	109.40	18	92	40	2.30
28	120	113.43	18	96	40	2.50
29	124	117.46	18	96	40	2.65
30	128	121.50	18	100	40	2.80
31	133	125.53	23	100	50	2.95
32	137	129.57	23	100	50	3.05
33	141	133.61	23	100	50	3.06
34	145	137.64	23	100	50	3.08
35	149	141.68	23	100	50	3.10
36	153	145.72	23	100	50	3.30
37	157	149.75	23	100	50	3.40
38	161	153.79	23	100	50	3.50
40	169	161.87	23	100	50	3.60
42	177	169.95	23	93	50	4.00
45	189	182.06	23	93	50	4.60
48	201	194.18	23	93	50	5.00
50	209	202.26	23	93	50	5.50
54	226	218.42	23	93	50	5.80
60	250	242.66	23	93	50	6.70
65	270	262.87	23	93	50	10.20
70	290	283.07	23	93	50	11.50

注:

节距 12.7mm
 内链节内宽 7.95mm
 滚子直径 7.95mm
 齿宽 h1 7.0mm
 齿宽 h2 21.4mm

NOTE:

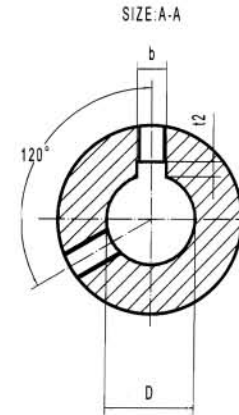
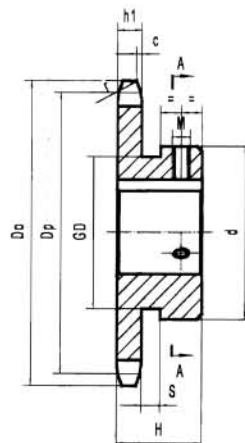
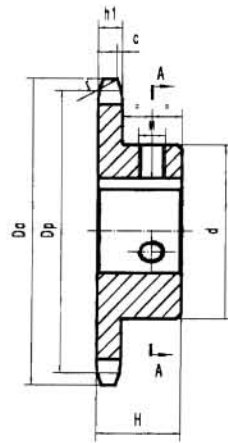
Pitch 12.7mm
 internal width 7.95mm
 Roller ϕ 7.95mm
 Tooth width h1 7.0mm
 Tooth width h2 21.4mm



NO. 50 STOCK SPROCKETS

—Bored To Size

15.875 Pitch



Single-Type BS

材质(Material):C45 单位(Dimension):mm

齿数 Teeth NO.	外径 Do	节径 Dp	凸台 Hub		螺孔中心距 a	重量 Weight (Kg)	库存完成孔径 ΦDH7
			直径 d	长度 H			
9	53	46.42	*34	25	5	0.20	16 17 18 19
10	58	51.37	*40	25	5	0.27	15 16 17 18 19 20 22
11	64	56.35	*45.5	25	5	0.33	15 16 17 18 19 20 22 24 25
12	69	61.34	*50	25	5	0.41	15 16 17 18 19 20 22 24 25 28 30 32
13	74	66.34	*51	25	5	0.46	14 15 16 17 18 19 20 22 24 25 28 30 32
14	79	71.34	52	25	7	0.52	14 15 16 17 18 19 20 22 24 25 28 30 32 35
15	84	76.35	57	25	7	0.62	14 15 16 17 18 19 20 22 24 25 28 30 32 35 38
16	89	81.37	62	25	7	0.72	14 15 16 17 18 19 20 22 24 25 28 30 32 35 38 40
17	94	86.39	67	25	7	0.83	14 15 16 17 18 19 20 22 24 25 28 30 32 35 38 40 42
18	100	91.42	72	28	8	1.00	14 15 16 17 18 19 20 22 24 25 28 30 32 35 38 40 42 45
19	105	96.45	73	28	8	1.10	14 15 16 17 18 19 20 22 24 25 28 30 32 35 38 40 42 45
20	110	101.48	73	28	8	1.20	14 15 16 17 18 19 20 22 24 25 28 30 32 35 38 40 42 45 50
21	115	106.51	73	28	8	1.20	17 18 19 20 22 24 25 28 30 32 35 38 40 42 45
22	120	111.55	73	28	8	1.30	17 18 19 20 22 24 25 28 30 32 35 38 40 42 45
23	125	116.58	73	28	8	1.30	17 18 19 20 22 24 25 28 30 38 40 42 45
24	130	121.62	73	28	8	1.40	17 18 19 20 22 24 25 28 30 32 35 38 40 42 45
25	135	126.66	73	28	8	1.50	17 18 19 20 22 24 25 28 30 32 35 38 40 42 45
26	140	131.70	73	28	8	1.50	24 25 28 30 32 35 38 40 45
27	145	136.74	73	28	8	1.50	24 25 28 30 32 35 38 40 45
28	150	141.79	73	28	8	1.60	24 25 28 30 32 35 38 40 42 45
29	155	146.83	73	28	8	1.70	24 30
30	161	151.87	73	28	8	1.80	22 25 28 30 32 35 38 40 45
31	166	156.92	73	28	8	1.85	
32	171	161.96	73	28	8	1.90	25 28 30 32 35 38 40 45
33	176	167.01	73	28	8	2.00	35
34	181	172.05	73	28	8	2.10	25 28 30 32 35 38 40 45
35	186	177.10	73	28	8	2.20	25 28 30 32 35 38 40 45

ΦD ^{H7}	b×t ²	M
14~17	5×2.3	6
18~22	6×2.8	6
24~30	8×3.3	8
32~38	10×3.3	8
40~42	12×3.3	8
45~50	14×3.8	10

齿数 Teeth NO.	ΦD ^{H7}	M
10	24,25	6
11	24,25	6
12	24,25,28,30,32	6
13	24,25,28,30,32	6
14	35	6

齿数 Teeth NO.	S	GD
9		29
10		34
11	6.4	39
12		44
13		49

注:

节距 15.875mm
内链节内宽 9.53mm
滚子直径 10.16mm
齿宽 h1 8.7mm

NOTE:

Pitch 15.875mm
Internal width 9.53mm
Roller φ 10.16mm
Tooth width h1 8.7mm



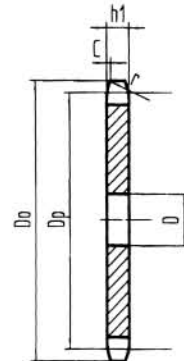
NO. 50 STOCK SPROCKETS

15.875 Pitch

Single Type A

材质(Material): C45 单位(Dimension):mm

齿数 Teeth NO.	外径 Do	节径 Dp	孔径 D	重量 Weight (Kg)
10	58	51.37	14	0.14
11	64	56.35	14	0.17
12	69	61.34	14	0.20
13	74	66.34	14	0.23
14	79	71.34	14	0.27
15	84	76.35	14	0.30
16	89	81.37	14	0.35
17	94	86.39	14	0.40
18	100	91.42	14	0.45
19	105	96.45	14	0.48
20	110	101.48	14	0.50
21	115	106.51	14	0.60
22	120	111.55	16	0.66
23	125	116.58	16	0.72
24	130	121.62	16	0.78
25	135	126.66	16	0.85
26	140	131.70	16	0.90
27	145	136.74	16	1.00
28	150	141.79	16	1.05
29	155	146.83	16	1.12
30	161	151.87	16	1.20
31	166	156.92	16	1.30
32	171	161.96	16	1.35
33	176	167.01	16	1.45
34	181	172.05	16	1.55
35	186	177.10	16	1.65
36	191	182.14	16	1.75
37	196	187.19	16	1.85
38	201	192.24	16	1.95
39	206	197.29	16	2.05
40	211	202.33	16	2.15
41	216	207.38	16	2.25
42	221	212.43	16	2.40
43	226	217.48	16	2.50
44	231	222.53	16	2.60
45	237	227.58	16	2.70
46	242	232.63	16	2.88
47	247	237.68	16	3.01
48	252	242.73	16	3.10
49	257	247.78	16	3.27
50	262	252.83	16	3.40
51	267	257.88	16	3.55
52	272	262.92	16	3.69
53	277	267.97	16	3.83
54	282	273.02	16	3.95
55	287	278.08	16	4.13
56	292	283.13	16	4.28
57	297	288.18	16	4.44
58	302	293.23	16	4.59
59	307	298.28	16	4.75
60	312	303.33	16	4.90
64	333	323.53	20	5.60
65	338	328.58	20	5.75
68	353	343.74	20	6.32
70	363	353.84	20	6.70
72	373	363.94	20	7.05
75	388	379.10	20	7.70
80	414	404.36	20	8.70
90	464	454.88	20	11.00



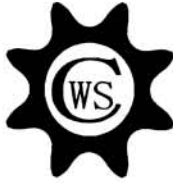
Single Type A

注:

节距 15.875mm
 内链节内宽 9.53mm
 滚子直径 10.16mm
 齿宽 h1 8.7mm

NOTE:

Pitch 15.875mm
 Internal width 9.53mm
 Roller ϕ 10.16mm
 Tooth width h1 8.7mm



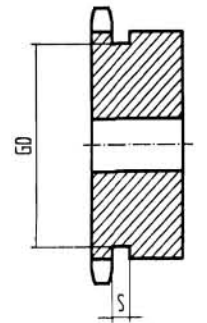
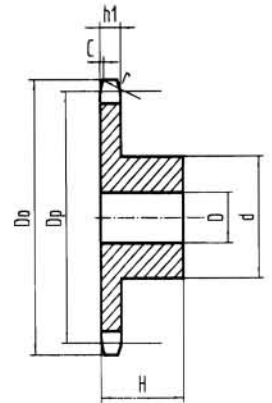
NO. 50 STOCK SPROCKETS

15.875 Pitch

Single Type B

材质(Material): C45 单位(Dimension):mm

齿数 Teeth NO.	外径 Do	节径 Dp	孔径 D	凸台 Hub		重量 Weight (Kg)
				直径 d	总长 H	
8	48	41.48	11.5	*30	25	0.12
9	53	46.42	11.5	*34	25	0.20
10	58	51.37	14.5	*40	25	0.27
11	64	56.35	14.5	*45.5	25	0.33
12	69	61.34	14.5	*50	25	0.41
13	74	66.34	14.5	*51	25	0.46
14	79	71.34	14.5	52	25	0.52
15	84	76.35	14.5	57	25	0.62
16	89	81.37	14	62	25	0.72
17	94	86.39	14	67	25	0.83
18	100	91.42	14	72	28	1.00
19	105	96.45	14	73	28	1.10
20	110	101.48	14	73	28	1.20
21	115	106.51	14	73	28	1.20
22	120	111.55	16	73	28	1.30
23	125	116.58	16	73	28	1.30
24	130	121.62	16	73	28	1.40
25	135	126.66	16	73	28	1.50
26	140	131.70	16	73	28	1.50
27	145	136.74	16	73	28	1.50
28	150	141.79	16	73	28	1.60
29	155	146.83	16	73	28	1.70
30	161	151.87	16	73	28	1.80
31	166	156.92	16	73	28	1.85
32	171	161.96	16	73	28	1.90
33	176	167.01	16	73	28	2.00
34	181	172.05	16	73	28	2.10
35	186	177.10	16	73	28	2.20
36	191	182.14	16	83	35	2.85
37	196	187.19	16	83	35	2.95
38	201	192.24	16	83	35	3.05
39	206	197.29	16	83	35	3.15
40	211	202.33	16	83	35	3.25
41	216	207.38	16	83	35	3.40
42	221	212.43	16	83	35	3.50
43	226	217.48	16	83	35	3.60
44	231	222.53	16	83	35	3.70
45	237	227.58	16	83	35	3.85
46	242	232.63	16	83	35	3.96
47	247	237.68	16	83	35	4.09
48	252	242.73	16	83	35	4.20
49	257	247.78	16	83	35	4.35
50	262	252.83	16	83	35	4.50
51	267	257.88	16	83	35	4.62
52	272	262.92	16	83	35	4.76
53	277	267.97	16	83	35	4.91
54	282	273.02	16	83	35	5.05
55	287	278.08	16	83	35	5.20
56	292	283.13	16	83	35	5.36
57	297	288.18	16	83	35	5.51
58	302	293.23	16	83	35	5.67
60	312	303.33	16	83	35	6.00
65	338	328.58	20	93	40	7.40
68	353	343.74	20	93	40	7.94
70	363	353.84	20	93	40	8.30
75	388	379.10	20	93	40	9.35
80	414	404.36	20	98	45	10.50
85	439	429.62	20	98	45	12.00
90	464	454.88	20	98	45	13.20



Single Type B

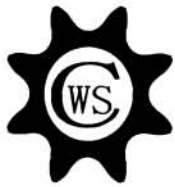
注:

节距 15.875mm
 内链节内宽 9.53mm
 滚子直径 10.16mm
 齿宽 h1 8.7mm

NOTE:

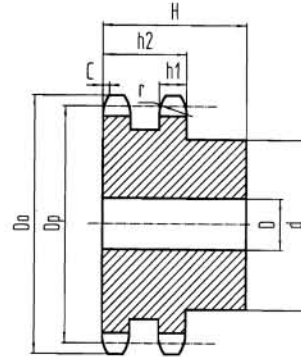
Pitch 15.875mm
 Internal width 9.53mm
 Roller ϕ 10.16mm
 Tooth width h1 8.7mm

齿数 Teeth NO.	S	GD
8		22
9		29
10	6.4	34
11		39
12		44
13		49



NO. 50 STOCK SPROCKETS

15.875 Pitch



Double Type B

Double-Type B

材质(Material): C45 单位(Dimension):mm

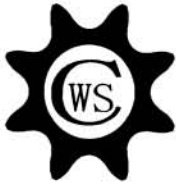
齿数 Teeth NO.	外径 Do	节径 Dp	孔径 D	凸台 Hub		重量 Weight (Kg)
				直径 d	长度 H	
10	58	51.37	14	35	40	0.50
11	64	56.35	14	40	40	0.50
12	69	61.34	14	42	40	0.62
13	74	66.34	14	49	40	0.75
14	79	71.34	14	54	40	0.90
15	84	76.35	14	59	40	1.10
16	89	81.37	14	64	45	1.40
17	94	86.39	14	68	45	1.60
18	100	91.42	14	74	45	1.80
19	105	96.45	14	79	45	2.10
20	110	101.48	18	84	45	2.30
21	115	106.51	18	89	45	2.60
22	120	111.55	18	94	50	3.00
23	125	116.58	18	99	50	3.50
24	130	121.62	18	105	50	3.80
25	135	126.66	18	105	50	4.20
26	140	131.70	18	105	50	4.50
27	145	136.74	18	105	50	4.80
28	150	141.79	18	110	50	5.10
29	155	146.83	18	110	50	5.50
30	161	151.87	18	120	50	5.80
31	166	156.92	23	120	50	5.90
32	171	161.96	23	120	50	6.00
33	176	167.01	23	120	50	6.50
34	181	172.05	23	120	50	6.80
35	186	177.10	23	117	50	7.00
36	191	182.14	23	117	50	7.00
38	201	192.24	23	117	50	8.00
40	211	202.33	23	117	56	9.00
42	221	212.43	23	98	56	8.88
45	237	227.58	23	98	56	9.96
48	252	242.73	23	98	56	8.00
50	262	252.83	23	98	56	9.00
54	282	273.02	23	98	63	9.90
60	312	303.33	23	98	63	11.70
65	338	328.58	23	98	63	13.00
70	363	353.84	23	98	63	15.00

注:

节距 15.875mm
 内链节内宽 9.53mm
 滚子直径 10.16mm
 齿宽 h1 8.4mm
 齿宽 h2 26.5mm

NOTE:

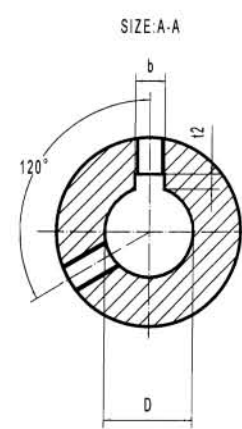
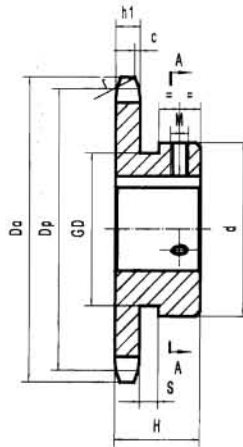
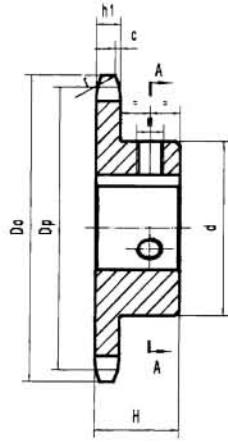
Pitch 15.875mm
 Internal width 9.53mm
 Roller ϕ 10.16mm
 Tooth width h1 8.4mm
 Tooth width h2 26.5mm



NO. 60 STOCK SPROCKETS

—Bored To Size

19.05 Pitch



Single-Type BS

材质(Material):C45 单位(Dimension):mm

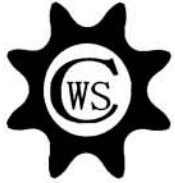
齿数 Teeth NO.	外径 Do	节径 Dp	凸台 Hub		螺孔中心距 a	重量Weight (Kg)	库存完成孔径 ΦDH7
			直径 d	长度 H			
10	68	61.65	*49	32	6	0.49	19 20 22 24 25
11	76	67.62	*51	32	6	0.60	19 20 22 24 25 28 30
12	83	73.60	51	32	8	0.69	19 20 22 24 25 28 30 32 35
13	89	79.60	57	32	8	0.81	19 20 22 24 25 28 30 32 35 38
14	95	85.61	62	32	8	0.96	19 20 22 24 25 28 30 32 35 38 40
15	101	91.62	68	32	8	1.10	18 19 20 22 24 25 28 30 32 35 38 40 42 45
16	107	97.65	73	32	8	1.30	19 20 22 24 25 28 30 32 35 38 40 42 45 48 50
17	113	103.67	73	32	8	1.40	19 20 22 24 25 28 30 32 35 38 40 42 45 48 50
18	119	109.71	83	40	12	2.00	19 20 22 24 25 28 30 32 35 38 40 42 45 48 50 55
19	126	115.74	83	40	12	2.10	19 20 22 24 25 28 30 32 35 38 40 42 45 48 50 55
20	132	121.78	83	40	12	2.20	19 20 22 24 25 28 30 32 35 38 40 42 45 48 50 55
21	138	127.82	83	40	12	2.30	20 22 24 25 28 30 32 35 38 40 42 45 48 50 55
22	144	133.86	83	40	12	2.50	20 22 24 25 28 30 32 35 38 40 42 45 48 50 55
23	150	139.90	83	40	12	2.50	20 22 24 25 28 30 32 35 38 40 42 45 48 50 55
24	156	145.95	83	40	12	2.60	20 22 24 25 28 30 32 35 38 40 42 45 48 50 55
25	162	151.99	83	40	12	2.70	20 22 24 25 28 30 32 35 38 40 42 45 48 50 55
26	168	158.04	83	40	12	2.90	20 22 24 25 28 30 32 35 38 40 42 45 48 50 55
27	174	164.09	83	40	12	3.00	22 24 25 28 30 32 35 38 40 42 45 48 50
28	180	170.14	83	40	12	3.10	22 24 25 28 30 32 35 38 40 42 45 48 50
29	187	176.20	83	40	12	3.30	22 24 25 28 30 32 35 38 40 42 45 48 50
30	193	182.25	83	40	12	3.40	22 24 25 28 30 32 35 38 40 42 45 48 50

ØD ^{H7}	b×t ²	M
18~22	2×2.8	6
24~30	8×3.3	8
32~38	10×3.3	8
40~42	12×3.3	8
45~50	14×3.8	10
55	16×4.3	12

齿数 Teeth NO.	ØD ^{H7}	M
12	35	6

齿数 Teeth NO.	S	GD
9		32
10	8	37
11		45

注:	NOTE:	
节距	19.05mm Pitch	19.05mm
内链节内宽	12.70mm Internal width	12.70mm
滚子直径	11.91mm Roller φ	11.91mm
齿宽 h1	11.70mm Tooth width h1	11.70mm



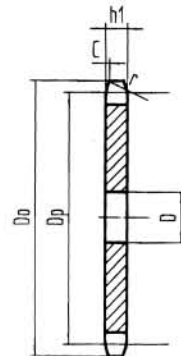
NO. 60 STOCK SPROCKETS

19.05 Pitch

Single Type A

材质(Material): C45 单位(Dimension):mm

齿数 Teeth NO.	外径 Do	节径 Dp	孔径 D	重量 Weight (Kg)
10	68	61.65	14	0.27
11	76	67.62	14	0.30
12	83	73.60	14	0.38
13	89	79.60	14	0.45
14	95	85.61	16	0.50
15	101	91.62	16	0.60
16	107	97.65	16	0.65
17	113	103.67	16	0.75
18	119	109.71	16	0.84
19	126	115.74	16	0.93
20	132	121.78	16	1.05
21	138	127.82	16	1.15
22	144	133.86	16	1.25
23	150	139.90	16	1.40
24	156	145.95	16	1.50
25	162	151.99	16	1.62
26	168	158.04	16	1.78
27	174	164.09	20	1.90
28	180	170.14	20	2.05
29	187	176.20	20	2.20
30	193	182.25	20	2.35
31	199	188.30	20	2.50
32	205	194.35	20	2.68
33	211	200.41	20	2.85
34	217	206.46	20	3.02
35	223	212.52	20	3.25
36	229	218.57	20	3.40
37	235	224.63	20	3.60
38	241	230.69	20	3.80
39	247	236.74	20	4.00
40	253	242.80	20	4.20
41	260	248.86	20	4.45
42	266	254.92	20	4.63
43	272	260.98	20	4.85
44	278	267.03	20	5.10
45	284	273.09	20	5.30
46	290	279.15	20	5.59
47	296	285.21	20	5.83
48	302	291.27	20	6.10
49	308	297.33	20	6.34
50	314	303.39	20	6.60
51	320	309.45	20	6.87
52	326	315.51	20	7.15
54	338	327.63	20	7.70
55	345	333.69	20	8.00
57	357	345.81	20	8.59
58	363	341.87	20	8.90
60	375	363.99	20	9.50
65	405	394.30	26	11.20
70	436	424.61	26	13.00
72	448	436.73	26	13.70
75	466	454.92	26	14.90
80	496	485.23	26	16.90
90	557	545.85	26	21.40



Single Type A

注:

节距 19.05mm
 内链节内宽 12.70mm
 滚子直径 11.91mm
 齿宽 h1 11.70mm

NOTE:

Pitch 19.05mm
 Internal width 12.70mm
 Roller ϕ 11.91mm
 Tooth width h1 11.70mm



NO. 60 STOCK SPROCKETS

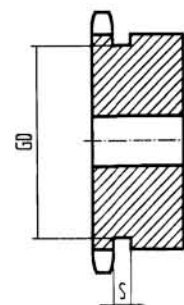
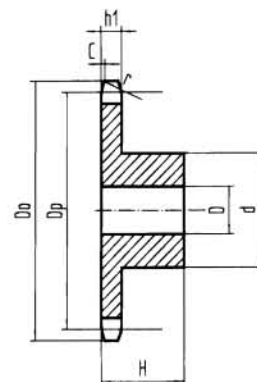
19.05 Pitch



Single Type B

材质(Material): C45 单位(Dimension):mm

齿数 Teeth NO.	外径 Do	节径 Dp	孔径 D	凸台 Hub		重量 Weight (Kg)
				直径 d	总长 H	
8	57	49.78	11.5	*34	32	0.30
9	63	55.70	11.5	*43	32	0.40
10	68	61.65	14.5	*49	32	0.49
11	76	67.62	14.5	*51	32	0.60
12	83	73.60	14.5	51	32	0.69
13	89	79.60	14	57	32	0.81
14	95	85.61	16	62	32	0.96
15	101	91.62	16	68	32	1.10
16	107	97.65	16	73	32	1.30
17	113	103.67	16	73	32	1.40
18	119	109.71	16	83	40	2.00
19	126	115.74	16	83	40	2.10
20	132	121.78	16	83	40	2.20
21	138	127.82	16	83	40	2.30
22	144	133.86	16	83	40	2.50
23	150	139.90	16	83	40	2.50
24	156	145.95	16	83	40	2.60
25	162	151.99	16	83	40	2.70
26	168	158.04	16	83	40	2.90
27	174	164.09	20	83	40	3.00
28	180	170.14	20	83	40	3.10
29	187	176.20	20	83	40	3.30
30	193	182.25	20	83	40	3.40
31	199	188.30	20	83	40	3.64
32	205	194.35	20	83	40	3.80
33	211	200.41	20	83	40	4.00
34	217	206.46	20	83	40	4.15
35	223	212.52	20	83	40	4.33
36	229	218.57	20	83	40	4.52
37	235	224.63	20	83	40	4.70
38	241	230.69	20	83	40	4.90
39	247	236.74	20	83	40	5.10
40	253	242.80	20	83	40	5.30
41	260	248.86	20	93	45	6.00
42	266	254.92	20	93	45	6.40
43	272	260.98	20	93	45	6.60
44	278	267.03	20	93	45	6.88
45	284	273.09	20	93	45	7.10
46	290	279.15	20	93	45	7.28
47	296	285.21	20	93	45	7.53
48	302	291.27	20	93	45	7.85
49	308	297.33	20	93	45	8.04
50	314	303.39	20	93	45	8.40
51	320	309.45	20	93	45	8.57
52	326	315.51	20	93	45	8.84
54	338	327.63	20	93	45	9.50
55	345	333.69	20	93	45	9.69
56	351	339.75	20	93	45	9.99
58	363	351.87	20	93	45	10.59
60	375	363.99	20	93	45	11.30
64	399	388.24	20	93	45	12.50
65	405	394.30	26	107	45	13.50
70	436	424.61	26	107	45	15.30
75	466	454.92	26	107	45	17.20
80	496	485.23	26	117	50	20.00
85	527	515.54	26	117	50	22.30
90	557	545.85	26	117	50	24.60



Single Type B

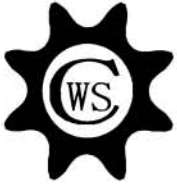
注:

节距 19.05mm
 内链节内宽 12.70mm
 滚子直径 11.91mm
 齿宽 h1 11.70mm

NOTE:

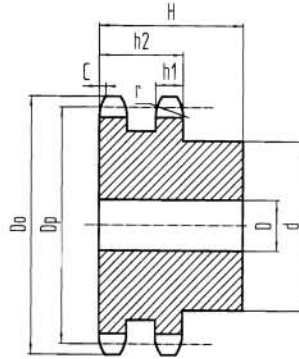
Pitch 19.05mm
 Internal width 12.70mm
 Roller ϕ 11.91mm
 Tooth width h1 11.70mm

齿数 Teeth NO.	S	GD
8	8	26
9		32
10		37
11		45
11		45



NO. 60 STOCK SPROCKETS

19.05 Pitch



Double Type B

Double-Type B

材质(Material): C45 单位(Dimension):mm

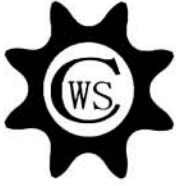
齿数 Teeth NO.	外径 Do	节径 Dp	孔径 D	凸台 Hub		重量 Weight (Kg)
				直径 d	总长 H	
10	68	61.65	16	35	50	0.90
11	76	67.62	16	44	50	1.00
12	83	73.60	16	50	50	1.20
13	89	79.60	18	57	50	1.40
14	95	85.61	18	64	56	1.80
15	101	91.62	18	70	56	2.10
16	107	97.65	18	76	56	2.50
17	113	103.67	18	82	56	2.60
18	119	109.71	18	88	56	3.20
19	126	115.74	18	94	56	3.70
20	132	121.78	23	100	56	4.20
21	138	127.82	23	100	56	4.40
22	144	133.86	23	100	56	4.90
23	150	139.90	23	100	56	4.70
24	156	145.95	23	120	56	6.00
25	162	151.99	23	120	56	6.40
26	168	158.04	23	120	56	6.80
27	174	164.09	23	120	56	7.30
28	180	170.14	23	120	56	7.80
29	187	176.20	28	120	56	8.20
30	193	182.25	28	130	56	9.00
31	199	188.30	28	130	56	9.30
32	205	194.35	28	127	56	9.50
33	211	200.41	28	127	56	9.70
34	217	206.46	28	127	56	10.50
35	223	212.52	28	127	56	11.00
36	229	218.57	28	98	56	8.50
38	241	230.69	28	98	56	9.00
40	253	242.80	28	98	56	9.70
42	266	254.92	28	107	56	11.00
45	284	273.09	28	107	71	12.80
48	302	219.27	28	107	71	14.00
50	314	303.39	28	107	71	16.00
54	338	327.63	28	107	71	18.00
60	375	363.99	28	107	71	21.50
65	405	394.30	28	107	71	24.00
70	436	424.61	28	107	71	30.00

注:

节距 19.05mm
 内链节内宽 12.70mm
 滚子直径 11.91mm
 齿宽 h1 11.3mm
 齿宽 h2 34.1mm

NOTE:

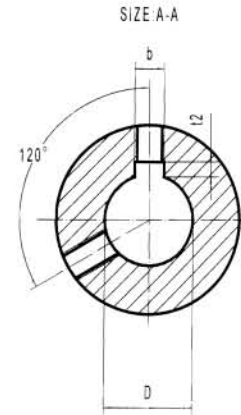
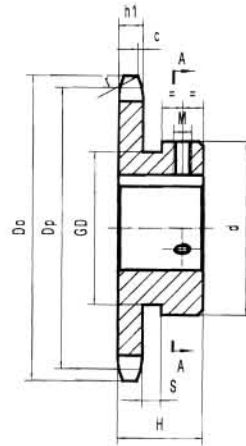
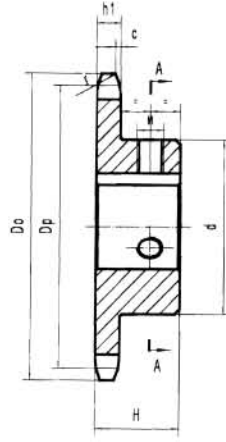
Pitch 19.05mm
 Internal width 12.70mm
 Roller ϕ 11.91mm
 Tooth width h1 11.3mm
 Tooth width h2 34.1mm



NO. 80 STOCK SPROCKETS

—Bored To Size

25.4 Pitch



Single-Type BS

材质(Material):C45 单位(Dimension):mm

齿数 Teeth NO.	外径 Do	节径 Dp	凸台 Hub		螺孔中心距 a	重量 Weight (Kg)	库存完成孔径 ΦDH7
			直径 d	长度 H			
9	85	74.27	*58	40	7	0.87	25 28 30 32 35
10	93	82.19	52	40	12	1.02	25 28 30 32
11	102	90.16	60	40	12	1.25	25 28 30 32 35 38
12	110	98.14	67	40	12	1.60	25 28 30 32 35 38 40 42
13	118	106.14	77	40	12	1.90	25 28 32 32 35 38 40 42 45 48 50
14	127	114.15	77	40	12	2.15	25 28 32 32 35 38 40 42 45 48 50
15	135	122.17	93	40	12	2.30	25 28 32 32 35 38 40 42 45 48 50 55 60
16	143	130.20	93	40	12	2.50	24 25 28 32 32 35 38 40 42 45 48 50 55 60
17	151	138.23	93	40	12	2.95	25 28 32 32 35 38 40 42 45 48 50 55 60
18	159	146.27	93	40	12	3.15	25 28 32 32 35 38 40 42 45 48 50 55 60
19	167	154.32	93	40	12	3.40	25 28 32 32 35 38 40 42 45 48 50 55 60
20	176	162.37	93	40	12	3.60	25 28 32 32 35 38 40 42 45 48 50 55 60
21	184	170.42	93	40	12	3.85	25 28 32 32 35 38 40 42 45 48 50 55 60

ΦD ^{H7}	b×t ²	M
22	6×2.8	6
24-30	8×3.3	8
32-38	10×3.3	8
40-42	12×3.3	8
45-50	14×3.8	10
55	16×4.3	12
60	18×4.4	12

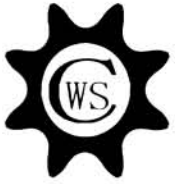
齿数 Teeth NO.	S	GD
9	10.4	44

注:

节距 25.40mm
内链节内宽 15.88mm
滚子直径 15.88mm
齿宽 h1 14.60mm

NOTE:

Pitch 25.40mm
Internal width 15.88mm
Roller φ 15.88mm
Tooth width h1 14.60mm

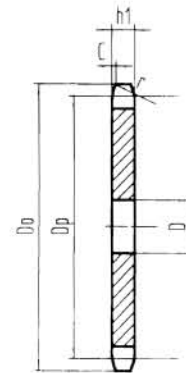


NO. 80 STOCK SPROCKETS

25.4 Pitch

材质(Material): C45 单位(Dimension):mm

齿数 Teeth NO.	外径 Do	节径 Dp	孔径 D	重量 Weight (Kg)
10	93	82.19	16	0.60
11	102	90.16	16	0.73
12	110	98.14	16	0.83
13	118	106.14	16	1.00
14	127	114.15	16	1.16
15	135	122.17	20	1.30
16	143	130.20	20	1.50
17	151	138.23	20	1.70
18	159	146.27	20	1.90
19	167	154.32	20	2.10
20	176	162.37	20	2.35
21	184	170.42	20	2.57
22	192	178.48	26	2.82
23	200	186.54	26	3.10
24	208	194.60	26	3.35
25	216	202.66	26	3.65
26	224	210.72	26	3.95
27	233	218.79	26	4.25
28	241	226.86	26	4.60
29	249	234.93	26	4.93
30	257	243.00	26	5.30
31	265	251.07	26	5.63
32	273	259.14	26	6.00
33	281	267.21	26	6.40
34	289	275.29	26	6.80
35	297	283.36	26	7.20
36	306	291.43	26	7.60
37	314	299.51	26	8.00
38	322	307.58	26	8.50
39	330	315.66	26	8.90
40	338	323.74	26	9.40
41	346	331.81	26	9.90
42	354	339.89	26	10.30
43	362	347.97	26	10.80
44	370	356.04	26	11.40
45	378	364.12	26	11.90
46	387	372.20	26	12.40
47	395	380.28	26	12.95
48	403	388.36	26	13.50
49	411	396.44	26	14.08
50	419	404.52	26	14.70
52	435	420.68	26	15.86
53	443	428.76	26	16.48
54	451	436.84	26	17.10
55	459	444.92	26	17.75
56	468	453.00	26	18.40
57	476	461.08	26	19.07
58	484	469.16	26	19.75
60	500	485.33	26	21.10
64	532	517.65	26	24.05
65	540	525.73	26	24.80
66	548	533.82	26	25.58
70	581	566.15	26	28.80
75	621	606.56	26	33.10
80	662	646.97	26	37.60
90	743	727.80	26	47.60



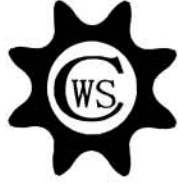
Single Type A

注:

节距 25.40mm
内链节内宽 15.88mm
滚子直径 15.88mm
齿宽 h1 14.60mm

NOTE:

Pitch 25.40mm
Internal width 15.88mm
Roller ϕ 15.88mm
Tooth width h1 14.60mm



NO. 80 STOCK SPROCKETS

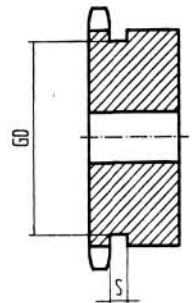
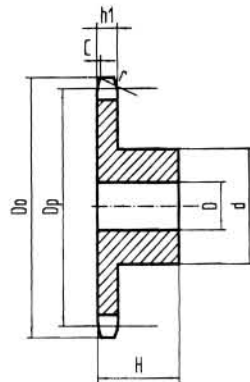
25.4 Pitch



Single-Type B

材质(Material): C45 单位(Dimension):mm

齿数 Teeth NO.	外径 Do	节径 Dp	孔径 D	凸台 Hub		重量 Weight (Kg)
				直径 d	总长 H	
8	77	66.37	16	*49	40	0.70
9	85	74.27	16	*58	40	0.87
10	93	82.19	16	52	40	1.02
11	102	90.16	16	60	40	1.25
12	110	98.14	16	67	40	1.60
13	118	106.14	16	77	40	1.90
14	127	114.15	16	77	40	2.15
15	135	122.17	20	93	40	2.30
16	143	130.20	20	93	40	2.50
17	151	138.23	20	93	40	2.95
18	159	146.27	20	93	40	3.15
19	167	154.32	20	93	40	3.40
20	176	162.37	20	93	40	3.60
21	184	170.42	20	93	40	3.85
22	192	178.48	26	107	45	5.00
23	200	186.54	26	107	45	5.23
24	208	194.60	26	107	45	5.50
25	216	202.66	26	107	45	5.80
26	224	210.72	26	107	45	6.10
27	233	218.79	26	107	45	6.40
28	241	226.86	26	107	45	6.75
29	249	234.93	26	107	45	7.10
30	257	243.00	26	107	45	7.40
31	265	251.07	26	107	45	7.80
32	273	259.14	26	107	45	8.15
33	281	267.21	26	107	45	8.50
34	289	275.29	26	107	45	8.90
35	297	283.36	26	107	45	9.30
36	306	291.43	26	117	50	10.60
37	314	299.51	26	117	50	11.00
38	322	307.58	26	117	50	11.40
39	330	315.66	26	117	50	11.90
40	338	323.74	26	117	50	12.40
41	346	331.81	26	117	50	12.80
42	354	339.89	26	117	50	13.30
43	362	347.97	26	117	50	13.80
44	370	356.04	26	117	50	14.30
45	378	364.12	26	117	50	14.90
46	387	372.20	26	117	50	15.30
47	395	380.28	26	117	50	15.70
48	403	388.36	26	117	50	15.80
50	419	404.52	26	117	50	17.65
52	435	420.68	26	117	50	18.70
53	443	428.76	26	117	50	19.30
54	451	436.84	26	117	50	20.00
55	459	444.92	26	117	50	20.60
56	468	453.00	26	117	50	21.30
58	484	469.16	26	117	50	22.55
60	500	485.33	26	117	50	23.10
65	540	525.73	26	127	63	29.40
70	581	566.15	26	127	63	32.10
75	621	606.56	26	127	63	36.20
80	662	646.97	26	137	71	42.90
90	743	727.80	26	137	71	53.00



Single Type B

注:

节距 25.40mm
 内链节内宽 15.88mm
 滚子直径 15.88mm
 齿宽 h1 14.60mm

NOTE:

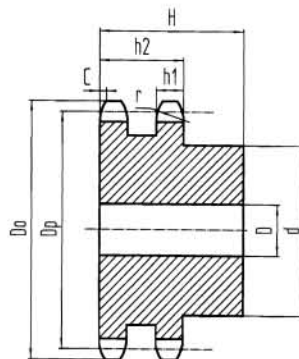
Pitch 25.40mm
 Internal width 15.88mm
 Roller φ 15.88mm
 Tooth width h1 14.60mm

齿数 Teeth NO.	S	GD
8		35
9	10.4	44



NO. 80 STOCK SPROCKETS

25.4 Pitch



Double Type B

Double-Type B

材质(Material): C45 单位(Dimension):mm

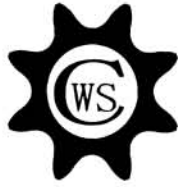
齿数 Teeth NO.	外径 Do	节径 Dp	孔径 D	凸台 Hub		重量 Weight (Kg)
				直径 d	总长 H	
10	93	82.19	21	58	63	2.00
11	102	90.16	21	60	63	2.50
12	110	98.14	23	69	63	2.70
13	118	106.14	23	80	63	3.40
14	127	114.15	23	88	63	3.90
15	135	122.17	23	95	63	4.40
16	143	130.20	23	100	71	5.40
17	151	138.23	23	100	71	6.00
18	159	146.27	23	120	71	7.50
19	167	154.32	23	120	71	8.00
20	176	162.37	23	130	71	9.00
21	184	170.42	23	130	71	10.30
22	192	178.48	33	117	71	11.00
23	200	186.54	33	117	71	11.80
24	208	194.60	33	117	80	12.60
25	216	202.66	33	117	80	13.40
26	224	210.72	33	117	80	14.30
28	241	226.86	33	117	80	16.00
30	257	243.00	33	117	80	18.30
32	273	259.14	33	117	80	20.40
35	297	283.36	33	117	80	23.90
36	306	291.43	33	117	80	25.10
38	322	307.58	38	127	80	27.70
40	338	323.74	38	127	90	30.40
42	354	339.89	38	127	90	33.00
45	378	364.12	38	127	90	37.50
48	403	388.36	38	127	90	43.00
50	419	404.52	38	127	90	46.00
54	451	436.84	38	127	90	52.50
60	500	485.33	38	127	90	64.00
65	540	525.73	38	127	90	73.50
70	581	566.15	38	127	90	90.40

注:

节距	25.4mm
内链节内宽	15.88mm
滚子直径	15.88mm
齿宽 h1	14.1mm
齿宽 h2	43.4mm

NOTE:

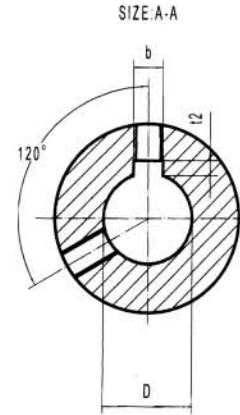
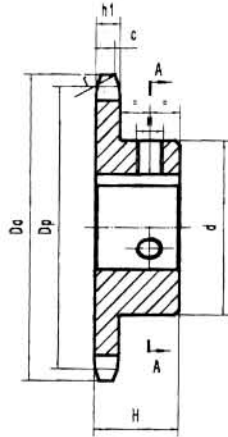
Pitch	25.4mm
Internal width	15.88mm
Roller ϕ	15.88mm
Tooth width h1	14.1mm
Tooth width h2	43.4mm



NO. 100 STOCK SPROCKETS

—Bored To Size

31.75 Pitch



Single-Type BS

材质(Material):C45 单位(Dimension):mm

齿数 Teeth NO.	外径 Do	节径 Dp	凸台 Hub		螺孔中心距 a	重量 Weight (Kg)	库存完成孔径 ΦDH7
			直径 d	长度 H			
10	117	102.75	65	50	16	1.90	25 28 30 32 35 38 40 42
11	127	112.70	75	50	16	2.30	25 28 30 32 35 38 40 42 45
12	138	122.67	86	50	16	2.90	25 28 30 32 35 38 40 42 45 48 50 55
13	148	132.67	94	50	16	3.10	25 28 30 32 35 38 40 42 48 48 50 55
14	158	142.68	98	50	16	3.60	25 28 30 32 35 38 40 42 45 48 50 55 60
15	168	152.71	98	50	16	4.20	32 35 38 40 42 45 48 50 55 60
16	179	162.74	98	50	16	4.60	38 45 50 55 60
17	189	172.79	107	50	16	5.30	38 45 50 60
18	199	182.84	107	50	16	5.70	38 45 50 60
19	209	192.90	107	50	16	6.10	38 45 50 60
20	220	202.96	107	50	16	6.50	38 45 50 60
21	230	213.03	107	50	16	7.00	45 50 60

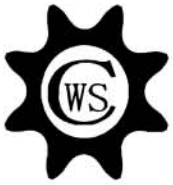
ØD ^{H7}	b×t ²	M
22	6×2.8	6
24~30	8×3.3	8
32~38	10×3.3	8
40~42	12×3.3	8
45~50	14×3.8	10
55	16×4.3	10
60~65	18×4.4	12

注:

节距 31.75mm
内链节内宽 19.05mm
滚子直径 19.05mm
齿宽 h1 17.60mm

NOTE:

Pitch 31.75mm
Internal width 19.05mm
Roller φ 19.05mm
Tooth width h1 17.60mm



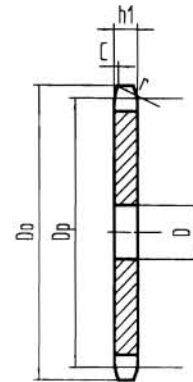
NO. 100 STOCK SPROCKETS

31.75 Pitch

Single Type A

材质(Material): C45 单位(Dimension):mm

齿数 Teeth NO.	外径 Do	节径 Dp	孔径 D	重量 Weight (Kg)
10	117	102.74	20	1.10
11	127	112.70	20	1.30
12	138	122.67	20	1.60
13	148	132.67	20	1.90
14	158	142.68	20	2.15
15	168	152.71	20	2.50
16	179	162.74	20	2.83
17	189	172.79	20	3.20
18	199	182.84	20	3.60
19	209	192.90	20	4.00
20	220	202.96	20	4.40
21	230	213.03	20	4.90
22	240	223.10	20	5.35
23	250	233.17	20	5.80
24	260	243.25	20	6.40
25	270	253.32	20	6.90
26	281	263.40	20	7.50
27	291	273.49	20	8.10
28	301	283.57	20	8.70
29	311	293.66	20	9.30
30	321	303.75	26	10.00
31	331	313.83	26	10.63
32	341	323.92	26	11.35
33	352	334.01	26	12.00
34	362	344.11	26	12.80
35	372	354.20	26	13.50
36	382	364.29	26	14.40
37	392	374.38	26	15.10
38	402	384.48	26	16.00
39	412	394.57	26	16.80
40	422	404.67	26	17.70
41	433	414.77	26	18.60
42	443	424.86	26	19.50
43	453	434.96	26	20.50
44	463	445.06	26	21.45
45	473	455.16	26	22.40
46	483	465.25	26	23.40
48	503	485.45	26	25.50
50	524	505.65	26	27.70
52	544	525.85	26	29.90
54	564	546.05	26	32.30
60	625	606.66	26	39.90
65	675	657.17	26	46.80
70	726	707.68	26	54.30
75	777	758.20	26	62.30
80	827	808.71	26	70.90
90	928	909.75	26	89.58



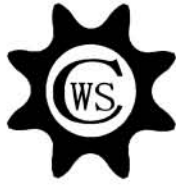
Single Type A

注:

节距 31.75mm
 内链节内宽 19.05mm
 滚子直径 19.05mm
 齿宽 h1 17.60mm

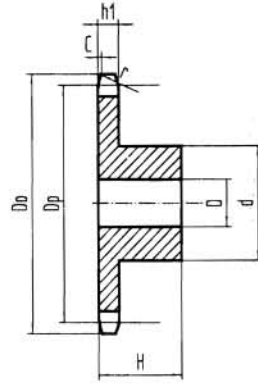
NOTE:

Pitch 31.75mm
 Internal width 19.05mm
 Roller ϕ 19.05mm
 Tooth width h1 17.60mm

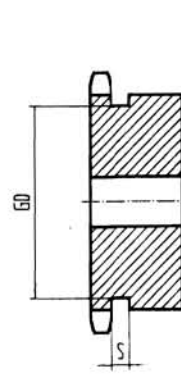


NO. 100 STOCK SPROCKETS

31.75 Pitch



Single Type B



Single Type C

Single Type B & Single Type C

材质(Material): C45 单位(Dimension):mm

型式 Type	齿数 Teeth NO.	外径 Do	节径 Dp	孔径 D	凸台 Hub		重量 Weight (Kg)
					直径 d	总长 H	
Single Type B	9	106	92.84	20	*70	50	1.6
	10	117	102.74	20	65	50	1.9
	11	127	112.70	20	75	50	2.3
	12	138	122.67	20	86	50	2.9
	13	148	132.67	20	94	50	3.1
	14	158	142.68	20	98	50	3.6
	15	168	152.71	20	98	50	4.2
	16	179	162.74	20	98	50	4.6
	17	189	172.79	20	107	50	5.3
	18	199	182.84	20	107	50	5.7
	19	209	192.90	20	107	50	6.1
	20	220	202.96	20	107	50	6.5
	21	230	213.03	20	107	50	7.0
	22	240	223.10	20	117	56	7.9
	23	250	233.17	20	117	56	8.5
	24	260	243.25	20	117	56	8.8
	25	270	253.32	20	117	56	9.3
	26	281	263.40	20	117	56	9.8
	27	291	273.49	20	117	56	10.3
	28	301	283.57	20	117	56	10.9
	29	311	293.66	20	117	56	11.5
	30	321	303.75	26	117	56	12.1
	32	341	323.92	26	117	56	14.5
	33	352	334.01	26	117	56	16.1
	34	362	344.11	26	117	56	16.6
	35	372	354.20	26	127	63	17.5
	36	382	364.39	26	127	63	18.0
	37	392	374.38	26	127	63	18.9
	38	402	384.48	26	127	63	19.5
	40	422	404.67	26	127	63	20.4
41	433	414.77	26	127	63	21.5	
42	443	424.86	26	127	63	22.6	
45	473	455.16	26	127	63	24.7	
47	493	475.35	26	127	63	26.7	
48	503	485.45	26	127	63	27.5	
50	524	505.65	26	127	63	30.0	
54	564	546.05	26	147	80	37.4	
55	574	556.15	26	147	80	41.6	
60	625	606.66	26	147	80	44.3	
65	675	657.17	26	147	80	54.5	
Single Type C	70	726	707.68	26	147	100	64.7
	75	777	758.20	26	147	100	72.7

注:

节距 31.75mm
内链节内宽 19.05mm
滚子直径 19.05mm
齿宽 h1 17.60mm

NOTE:

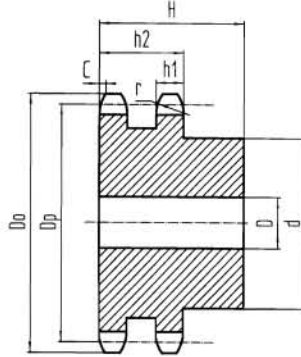
Pitch 31.75mm
Internal width 19.05mm
Roller ϕ 19.05mm
Tooth width h1 17.60mm

齿数 Teeth NO.	S	GD
9	11.5	55

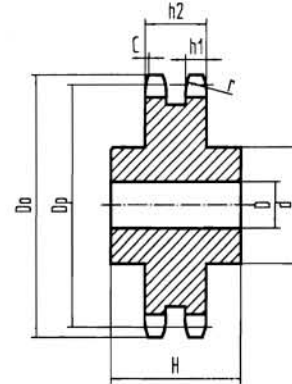


NO. 100 STOCK SPROCKETS

31.75 Pitch



Double Type B



Double Type C

Double Type B & Double Type C

材质(Material): C45 单位(Dimension):mm

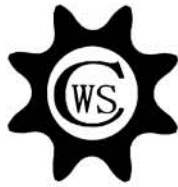
型式 Type	齿数 Teeth NO.	外径 Do	节径 Dp	孔径 D	凸台 Hub		重量 Weight (Kg)
					直径 d	总长 H	
Double Type B	10	117	102.74	22	70	80	3.50
	11	127	112.70	22	80	80	4.20
	12	138	122.67	28	90	80	5.00
	13	148	132.67	28	100	80	6.00
	14	158	142.68	28	110	80	7.00
	15	168	152.71	28	120	80	7.10
	16	179	162.74	28	130	80	7.70
	17	189	172.79	28	130	80	8.90
	18	199	182.84	28	130	80	9.60
	19	209	192.90	28	130	90	12.80
	20	220	202.96	28	130	90	13.50
	21	230	213.03	28	130	90	14.30
	22	240	223.10	28	127	90	19.35
	23	250	233.17	28	127	90	20.85
	24	260	243.25	38	137	90	22.62
	25	270	253.32	38	137	90	24.25
	26	281	263.40	38	137	90	25.94
	28	301	283.57	38	137	90	29.52
	30	321	303.75	38	137	90	33.37
	32	341	323.92	38	137	90	37.48
35	372	354.20	38	137	90	44.15	
36	382	364.39	38	137	90	46.50	
38	402	384.48	38	137	90	51.94	
40	422	404.67	38	147	100	58.46	
42	443	424.86	38	147	100	63.90	
45	473	455.16	38	147	100	72.56	
48	503	485.45	38	147	100	81.81	
50	524	505.65	38	147	100	88.31	
54	564	546.05	38	147	100	102.19	
Double Type C	60	625	606.66	38	147	125	127.87

注:

节距 31.75mm
 内链节内宽 19.05mm
 滚子直径 19.05mm
 齿宽 h1 17.0mm
 齿宽 h2 52.8mm

NOTE:

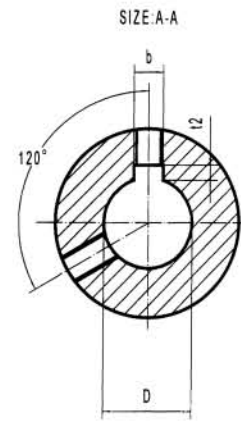
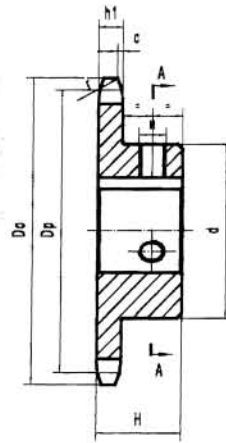
Pitch 31.75mm
 Internal width 19.05mm
 Roller ϕ 19.05mm
 Tooth width h1 17.0mm
 Tooth width h2 52.8mm



NO. 120 STOCK SPROCKETS

—Bored To Size

38.10 Pitch



Single Type BS

材质(Material):C45 单位(Dimension):mm

齿数 Teeth NO.	外径 D ₀	节径 D _p	凸台 Hub		螺孔中心距 a	重量 Weight (Kg)	库存完成孔径 ΦD ^{H7}
			直径 d	长度 H			
10	140	123.29	78	56	16	3.20	
11	153	135.24	91	56	16	4.00	
12	165	147.21	98	56	16	4.80	
13	177	159.20	98	56	16	5.30	45 48 50 55 60
14	190	171.22	107	56	16	6.30	45 48 50 55 60
15	202	183.25	117	63	16	7.80	45 48 50 55 60
16	214	195.29	117	63	16	8.40	50 60
17	227	207.35	117	63	16	9.10	
18	239	219.41	117	63	16	9.90	50 60
19	251	231.48	117	63	16	10.70	60
20	263	243.55	127	63	16	12.10	50 60
21	276	255.63	127	63	16	13.00	50 60

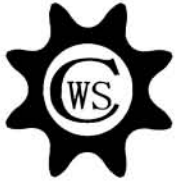
ΦD ^{H7}	b×t ²	M
28~30	8×3.3	8
32~38	10×3.3	8
40~42	12×3.3	8
45~50	14×3.8	10
55	16×4.3	12
60~65	18×4.4	12
70	20×4.9	16

注:

节距 38.10mm
内链节内宽 25.40mm
滚子直径 22.23mm
齿宽 h1 23.50mm

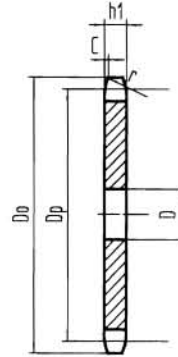
NOTE:

Pitch 38.10mm
Internal width 25.40mm
Roller φ 22.23mm
Tooth width h1 23.50mm



NO. 120 STOCK SPROCKETS

38.10 Pitch



Single Type A

Single Type A

材质(Material): C45 单位(Dimension):mm

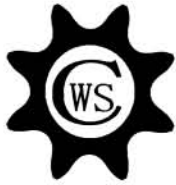
齿数 Teeth NO.	外径 Do	节径 Dp	孔径 D	重量 Weight (Kg)
10	140	123.29	20	2.16
11	153	135.24	20	2.60
12	165	147.21	20	3.10
13	177	159.20	20	3.60
14	190	171.22	20	4.20
15	202	183.25	20	4.80
16	214	195.29	20	5.50
17	227	207.35	20	6.20
18	239	219.41	20	6.95
19	251	231.48	20	7.70
20	263	243.55	20	8.55
21	276	255.63	20	9.40
22	288	267.72	26	10.30
23	300	279.80	26	11.30
24	312	291.90	26	12.30
25	324	303.99	26	13.30
26	337	316.09	26	14.40
27	349	328.19	26	15.50
28	361	340.29	26	16.70
29	373	352.39	26	17.80
30	385	364.50	26	19.20
31	398	376.60	26	20.40
32	410	388.71	26	21.80
33	422	400.82	26	23.20
34	434	412.93	26	24.60
35	446	425.04	26	26.10
36	458	437.15	26	27.60
38	483	461.38	26	30.80
40	507	485.60	26	34.10
42	531	509.84	26	37.60
44	556	534.07	26	41.20
45	568	546.19	26	43.10
46	580	558.30	26	45.10
48	604	582.54	26	49.00
50	628	606.78	26	53.30
54	677	655.26	26	62.10
60	750	727.99	26	76.70
70	871	849.22	26	104.30
75	932	909.84	26	119.80
80	993	970.46	26	136.30

注:

节距 38.10mm
 内链节内宽 25.40mm
 滚子直径 22.23mm
 齿宽 h1 23.50mm

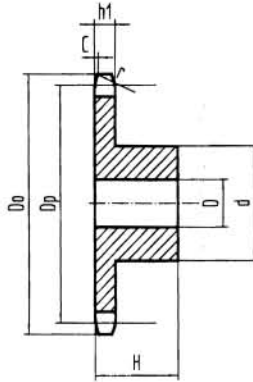
NOTE:

Pitch 38.10mm
 Internal width 25.40mm
 Roller ϕ 22.23mm
 Tooth width h1 23.50mm

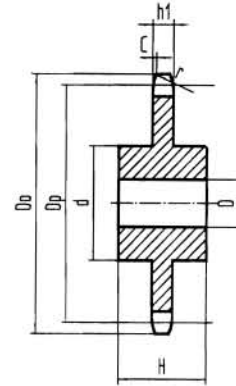


NO. 120 STOCK SPROCKETS

38.10 Pitch



Single Type B



Single Type C

Single Type B & Single Type C

材质(Material): C45 单位(Dimension):mm

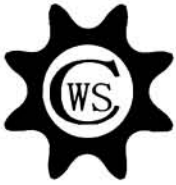
型式 Type	齿数 Teeth NO.	外径 Do	节径 Dp	孔径 D	凸台 Hub		重量 Weight (Kg)
					直径 d	总长 H	
Single Type B	10	140	123.29	20	78	56	3.20
	11	153	135.24	20	91	56	4.00
	12	165	147.21	20	98	56	4.80
	13	177	159.20	20	98	56	5.30
	14	190	171.22	20	107	56	6.30
	15	202	183.25	20	117	63	7.80
	16	214	195.29	20	117	63	8.40
	17	227	207.35	20	117	63	9.10
	18	239	219.41	20	117	63	9.90
	19	251	231.48	20	117	63	10.70
	20	263	243.55	20	127	63	12.10
	21	276	255.63	20	127	63	13.00
	22	288	267.72	26	127	63	13.40
	23	300	279.80	26	127	63	14.50
	24	312	291.90	26	127	63	15.20
	25	324	303.99	26	127	63	16.20
	26	337	316.09	26	127	63	17.20
	28	361	340.29	26	137	71	20.90
	30	385	364.50	26	137	71	23.20
	32	410	388.71	26	137	71	25.70
	33	422	400.82	26	137	71	28.40
	34	434	412.93	26	137	71	29.00
	35	446	425.04	26	137	71	29.70
	36	458	437.15	26	137	71	32.00
	38	483	461.38	26	137	71	35.00
	40	507	485.60	26	147	80	38.20
42	531	509.84	26	147	80	42.00	
45	568	546.19	26	147	80	47.60	
48	604	582.54	26	147	80	53.00	
50	628	606.78	26	147	80	58.00	
Single Type C	54	677	655.26	26	147	100	65.20
	60	750	727.99	26	167	100	78.00

注:

节距 38.10mm
 内链节内宽 25.40mm
 滚子直径 22.23mm
 齿宽 h1 23.50mm

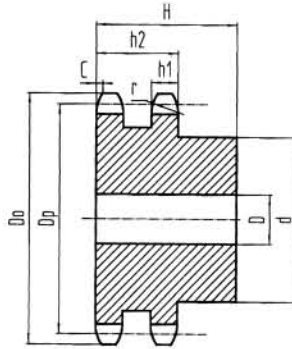
NOTE:

Pitch 38.10mm
 Internal width 25.40mm
 Roller ϕ 22.23mm
 Tooth width h1 23.50mm

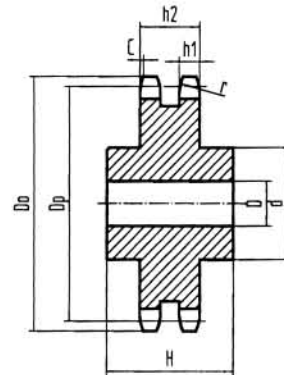


NO. 120 STOCK SPROCKETS

38.10 Pitch



Double Type B



Double Type C

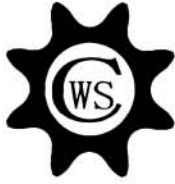
Double Type B & Double Type C

材质(Material): C45 单位(Dimension):mm

型式 Type	齿数 Teeth NO.	外径 Do	节径 Dp	孔径 D	凸台Hub		重量 Weight (Kg)
					直径 d	总长 H	
Double Type B	10	140	123.29	26	80	100	8.00
	11	153	135.24	26	90	100	8.70
	12	165	147.21	28	100	100	9.20
	13	177	159.20	28	115	100	10.90
	14	190	171.22	28	120	100	11.40
	15	202	183.25	38	120	100	13.20
	16	214	195.29	38	140	100	16.50
	17	227	207.35	38	140	100	19.00
	18	239	219.41	38	150	100	21.00
	19	251	231.48	38	150	100	23.00
	20	263	243.55	38	150	100	26.00
	21	276	255.63	38	150	100	28.00
	22	288	267.72	38	147	100	30.00
	23	300	279.80	38	147	100	33.00
	24	312	291.90	38	157	100	31.00
	25	324	303.99	38	157	100	33.00
	26	337	316.09	38	157	100	35.00
	28	361	340.29	38	157	100	39.00
30	385	364.50	38	157	100	43.00	
32	410	388.71	38	157	100	47.00	
35	446	425.04	38	157	100	56.80	
36	458	437.15	38	157	100	60.00	
38	483	461.38	38	157	100	67.00	
Double Type C	40	507	485.60	43	177	140	84.30
	42	531	509.84	43	177	140	87.00
	45	568	546.19	43	177	140	98.50
	48	604	582.54	43	177	140	104.00
	50	628	606.78	43	177	140	115.00
	54	677	655.26	43	177	140	121.00
	60	750	727.99	43	177	140	131.60

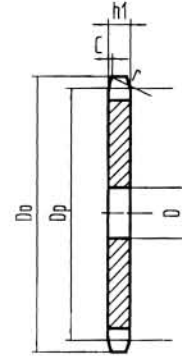
注:
 节距 38.10mm
 内链节内宽 25.40mm
 滚子直径 22.23mm
 齿宽 h1 22.70mm
 齿宽 h2 68.11mm

NOTE:
 Pitch 38.10mm
 Internal width 25.40mm
 Roller ϕ 22.23mm
 Tooth width h1 22.70mm
 Tooth width h2 68.11mm



NO. 140 STOCK SPROCKETS

44.45 Pitch



Single Type A

Single Type A

材质(Material): C45 单位(Dimension):mm

齿数 Teeth NO.	外径 Do	节径 Dp	孔径 D	重量 Weight (Kg)
10	163	143.84	26	2.90
11	178	157.78	26	3.60
12	193	171.74	26	4.20
13	207	185.74	26	4.90
14	221	199.76	26	5.70
15	236	213.79	26	6.60
16	250	227.84	26	7.50
17	264	241.91	26	8.40
18	279	255.98	26	9.40
19	293	270.06	26	10.50
20	307	284.15	26	11.60
21	322	298.24	26	12.80
22	336	312.34	26	14.10
23	350	326.44	26	15.30
24	364	340.54	26	16.70
25	379	354.65	26	18.10
26	393	368.77	26	19.60
28	421	397.00	26	23.00
30	450	425.24	26	26.00
32	478	453.49	26	29.70
35	521	495.88	26	35.60
38	563	538.27	26	41.90
40	591	566.54	26	46.40
42	620	594.81	26	51.10
45	662	637.63	26	58.80
48	705	679.63	26	66.90
50	733	707.91	26	72.50
54	790	764.47	26	84.60
60	875	849.32	26	104.00

注:

节距	44.45mm
内链节内宽	25.22mm
滚子直径	25.40mm
齿宽 h1	23.50mm

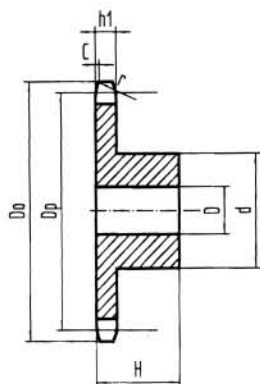
NOTE:

Pitch	44.45mm
Internal width	25.22mm
Roller ϕ	25.40mm
Tooth width h1	23.50mm

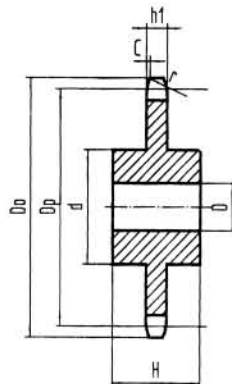


NO. 140 STOCK SPROCKETS

44.45 Pitch



Single Type B



Single Type C

Single Type B & Single Type C

材质(Material): C45 单位(Dimension):mm

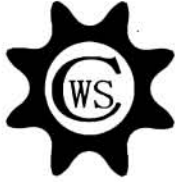
型式 Type	齿数 Teeth NO.	外径 Do	节径 Dp	孔径 D	凸台 Hub		重量 Weight (Kg)
					直径 d	总长 H	
Single Type B	10	163	143.84	26	98	56	4.90
	11	178	157.78	26	106	56	5.50
	12	193	171.74	26	117	56	6.60
	13	207	185.74	26	117	63	7.90
	14	221	199.76	26	127	63	9.30
	15	236	213.79	26	127	63	10.10
	16	250	227.84	26	127	63	11.00
	17	264	241.91	26	127	63	12.00
	18	279	255.98	26	127	63	13.00
	19	293	270.06	26	137	71	15.60
	20	307	284.15	26	137	71	16.70
	21	322	298.24	26	137	71	17.90
	22	336	312.34	26	137	71	18.40
	23	350	326.44	26	137	71	20.10
	24	364	340.54	26	137	71	20.90
	25	379	354.65	26	147	80	24.10
	26	393	368.77	26	147	80	25.50
	27	407	382.88	26	147	80	28.20
	28	421	397.00	26	147	80	30.10
	30	450	425.24	26	147	80	31.50
32	478	453.49	26	147	80	36.00	
35	521	495.88	26	157	90	42.90	
36	535	510.01	26	157	90	47.40	
38	563	538.27	26	157	90	51.00	
40	591	566.54	26	157	90	53.10	
42	620	594.81	26	157	90	60.00	
Single Type C	45	662	637.63	26	167	100	68.00
	48	705	679.63	26	167	100	75.00
	50	733	707.91	26	167	100	85.30
	54	790	764.47	26	167	100	97.40
	60	875	849.32	26	167	112	119.30

注:

节距 44.45mm
 内链节内宽 25.22mm
 滚子直径 25.40mm
 齿宽 h1 23.50mm

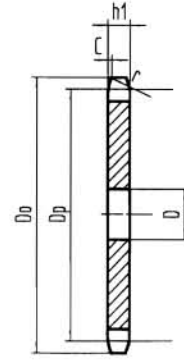
NOTE:

Pitch 44.45mm
 Internal width 25.22mm
 Roller ϕ 25.40mm
 Tooth width h1 23.50mm



NO. 160 STOCK SPROCKETS

50.80 Pitch



Single Type A

Single Type A

材质(Material): C45 单位(Dimension):mm

齿数 Teeth NO.	外径 Do	节径 Dp	孔径 D	重量 Weight (Kg)
10	186	164.39	26	4.85
11	204	180.31	26	5.85
12	220	196.28	26	6.90
13	237	212.27	26	8.10
14	253	228.30	26	9.40
15	269	244.33	26	10.80
16	286	260.39	26	12.25
17	302	276.46	26	13.80
18	319	292.55	26	15.50
19	335	308.64	26	17.20
20	351	324.74	26	19.00
21	368	340.84	26	21.00
22	384	356.96	26	23.00
23	400	373.07	26	25.10
24	416	389.19	26	27.40
25	433	405.32	26	29.70
26	449	421.45	26	32.10
28	481	453.72	26	37.20
30	514	485.99	26	42.70
32	546	518.28	26	48.70
35	595	566.71	26	58.10
38	644	615.17	26	68.50
40	676	647.47	26	75.10
45	757	728.25	26	96.00
48	806	776.72	26	109.00
50	838	809.04	26	118.50
54	903	873.68	26	138.20
60	1000	970.65	26	170.00

注:

节距 50.80mm
 内链节内宽 31.55mm
 滚子直径 28.58mm
 齿宽 h1 29.40mm

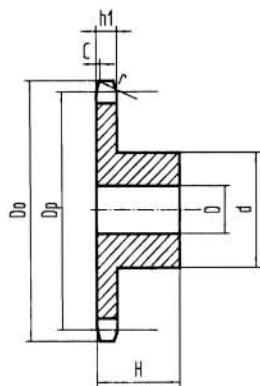
NOTE:

Pitch 50.80mm
 Internal width 31.55mm
 Roller ϕ 28.58mm
 Tooth width h1 29.40mm

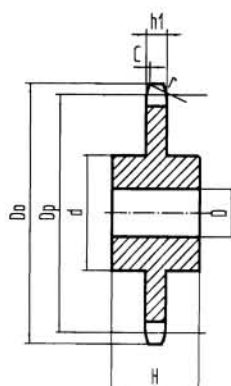


NO. 160 STOCK SPROCKETS

50.80 Pitch



Single Type B



Single Type C

Single Type B & Single Type C

材质(Material): C45 单位(Dimension):mm

型式 Type	齿数 Teeth NO.	外径 Do	节径 Dp	孔径 D	凸台 Hub		重量 Weight (Kg)
					直径 d	总长 H	
Single Type B	10	186	164.39	26	105	63	6.80
	11	204	180.31	26	117	63	8.30
	12	220	196.28	26	127	63	9.90
	13	237	212.27	26	137	71	12.50
	14	253	228.30	26	137	71	13.80
	15	269	244.33	26	137	71	15.20
	16	286	260.39	26	147	71	17.40
	17	302	276.46	26	147	71	18.90
	18	319	292.55	26	147	71	20.60
	19	335	308.64	26	147	71	22.30
	20	351	324.74	26	147	71	24.20
	21	368	340.84	26	147	71	26.10
	22	384	356.96	26	167	80	30.20
	24	416	389.19	26	167	80	34.40
	25	433	405.32	26	167	80	36.60
26	449	421.45	26	167	80	38.90	
30	514	485.99	26	167	100	52.30	
32	546	518.28	26	167	100	59.00	
35	595	566.71	26	167	100	66.90	
Single Type C	40	676	647.47	26	167	112	88.00
	45	757	728.25	26	187	125	115.00
	48	806	776.72	26	187	125	128.00
	50	838	809.04	26	187	125	138.70
	54	903	873.68	26	187	125	158.40
	60	1000	970.65	26	187	125	190.80

注:

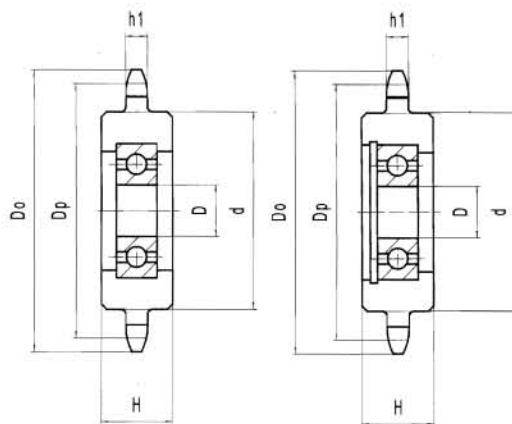
节距 50.80mm
内链节内宽 31.55mm
滚子直径 28.58mm
齿宽 h1 29.40mm

NOTE:

Pitch 50.80mm
Internal width 31.55mm
Roller ϕ 28.58mm
Tooth width h1 29.40mm



IDLER SPORCKETS



EPID

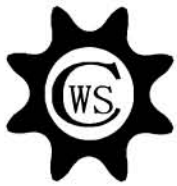
材质(Material):C45 单位(Dimension):mm

编号 Catalog NO.	齿数 Teeth NO.	孔径 D	外径 Do	节径 Dp	齿宽 h1	凸台直径 d	总厚 H	重量 Weight (Kg)
35C	18	15	60	54.85	4.3	42	17	0.07
40C	15	15	67	61.08	7.2	42	17	0.07
50C	13	15	74	66.34	8.7	42	17	0.08
60C	11	15	76	67.62	11.7	42	17	0.08

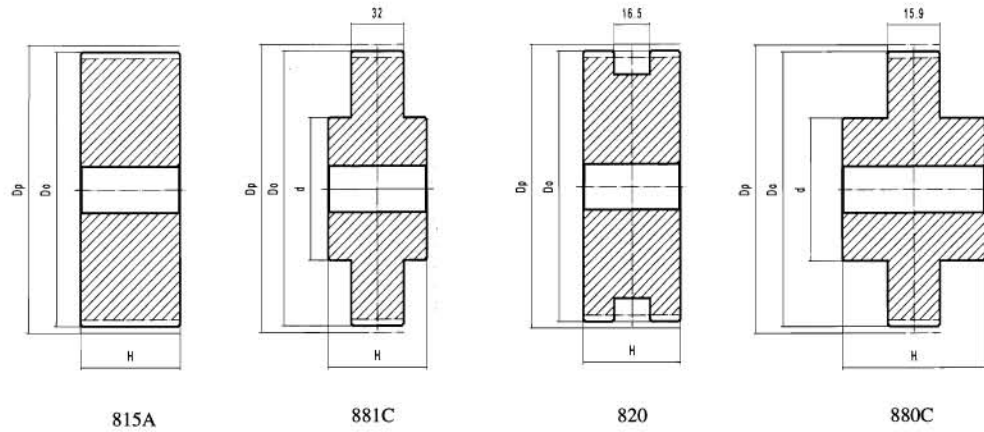
ID

材质(Material):C45 单位(Dimensions):mm

编号 Catalog NO.	齿数 Teeth NO.	孔径 D	外径 Do	节径 Dp	齿宽 h1	凸台直径 d	总厚 H	重量 Weight (Kg)
35C	16	10	54	48.82	4.3	38	14	0.11
		12				44	17	0.10
	18	15	60	54.85		53	19	0.16
	21	17	69	63.91		60	21	0.24
40C	25	20	81	76.00	7.2	38	14	0.33
		10	59	53.07		44	17	0.15
	13	12	67	61.08		53	19	0.14
	15	15	76	69.12		60	21	0.19
50C	17	17	84	77.16	8.7	43	16	0.30
	12	12	69	61.34		44	17	0.21
	13	15	74	66.34		53	19	0.23
	15	17	84	76.35		60	21	0.37
60C	17	20	94	86.39	11.7	44	16	0.49
	11	12	76	67.62		44	17	0.26
	13	15	89	79.60		53	19	0.27
	14	17	95	85.61		60	21	0.46
80C	9	15	85	74.27	14.6	44	17	0.56
	10	17	93	82.20		52	19	0.38
	11	20	102	90.16		60	21	0.57

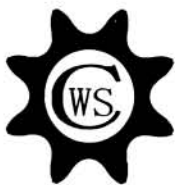


WHEELS TABLE TOP

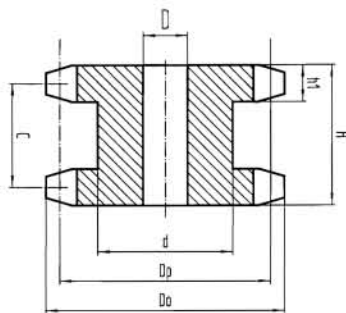


材质(Material): C45 单位(Dimensions):mm

编号 Catalog NO.	割出齿数	作用齿数	节径 Dp	外径 Do	凸台 Hub		概重 Weight (Kg)
					直径 d	总长 H	
815 A 9 1/2	19	9.5	117.3	117	—	43.5	3.2
815 A 10 1/2	21	10.5	129.2	129	—	43.5	3.9
815 A 11 1/2	23	11.5	141.2	141	—	43.5	4.7
815 A 12 1/2	25	12.5	153.2	153	—	43.5	5.6
881 C 10 1/2	21	10.5	129.2	129	82	41	3.3
881 C 11 1/2	23	11.5	141.2	141	82	41	3.9
881 C 12 1/2	25	12.5	153.2	153	82	41	4.6
820 A 9 1/2	19	9.5	117.3	117	—	43.5	2.8
820 A 10 1/2	21	10.5	129.2	129	—	43.5	3.5
820 A 11 1/2	23	11.5	141.2	141	—	43.5	4.3
820 A 12 1/2	25	12.5	153.2	153	—	43.5	5.2
880 C 10	10	10	123.3	123	71	45	2.1
880 C 10 1/2	21	10.5	129.2	129	71	45	2.3
880 C 11	11	11	135.2	135	71	45	2.5
880 C 11 1/2	23	11.5	141.2	141	71	45	2.7
880 C 12	12	12	147.2	147	71	45	2.9
880 C 12 1/2	25	12.5	153.2	153	71	45	3.0



SINGLE DOUBLE SPROCKETS



材质(Material): C45 单位(Dimensions):mm

链轮号 Sprocket NO.	齿数 Teeth NO.	外径 Do	节径 Dp	孔径 D	凸台 Hub		重量 Weight (Kg)		
					直径 d	总长 H			
40	12	55	49.07	10	34	35	0.33	节距	12.7mm
	13	59	53.07	13	38	35	0.40	内链节内宽	7.95mm
	14	63	57.07	13	42	35	0.49	滚子直径	7.95mm
	15	67	61.08	13	46	35	0.57	齿宽 h1	7.2mm
	16	71	65.10	13	50	35	0.66		
	17	76	69.12	13	54	35	0.76	Pitch	12.7mm
	18	80	73.14	13	59	35	0.89	internal width	7.95mm
	19	84	77.16	13	63	35	1.00	Roller φ	7.95mm
	20	88	81.18	14	67	35	1.14	Tooth width h1	7.2mm
	21	92	85.21	14	71	35	1.23		
50	12	69	61.34	14	43	40	0.63	节距	15.875mm
	13	74	66.34	14	48	40	0.75	内链节内宽	9.53mm
	14	79	71.34	14	53	40	0.90	滚子直径	10.16mm
	15	84	76.35	14	58	40	1.04	齿宽 h1	8.7mm
	16	89	81.37	14	63	40	1.22		
	17	94	86.39	14	68	40	1.41	Pitch	15.875mm
	18	100	91.42	14	73	40	1.61	internal width	9.53mm
	19	105	96.45	14	79	40	1.80	Roller φ	10.16mm
	20	110	101.48	14	84	40	1.95	Tooth width h1	8.7mm
	21	115	106.51	14	89	40	2.27		
60	12	83	73.60	14	51	50	1.14	节距	19.05mm
	13	89	79.60	14	57	50	1.39	内链节内宽	12.70mm
	14	95	85.61	16	64	50	1.63	滚子直径	11.91mm
	15	101	91.62	16	70	50	1.96	齿宽 h1	11.70mm
	16	107	97.65	16	76	50	2.20		
	17	113	103.67	16	82	50	2.56	Pitch	19.05mm
	18	119	109.71	16	88	50	2.90	internal width	12.70mm
	19	126	115.74	16	94	50	3.26	Roller φ	11.91mm
	20	132	121.78	16	100	50	3.70	Tooth width h1	11.70mm
	21	138	127.82	16	107	50	4.13		
80	12	110	98.14	20	69	60	2.52	节距	25.40mm
	13	118	106.14	20	77	60	3.04	内链节内宽	15.88mm
	14	127	114.15	20	85	60	3.60	滚子直径	15.88mm
	15	135	122.17	20	93	60	4.16	齿宽 h1	14.60mm
	16	143	130.20	20	102	60	4.89		
	17	151	138.23	20	110	60	5.61	Pitch	25.40mm
	18	159	146.27	20	118	60	6.36	internal width	15.88mm
	19	167	154.32	21	126	60	7.13	Roller φ	15.88mm
	20	176	162.37	21	134	60	8.03	Tooth width h1	14.60mm
	21	184	170.42	21	142	60	8.88		



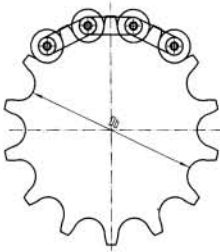
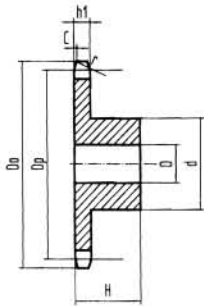
DOUBLE-PITCH SPROCKETS

R型滚子链链轮

R型滚子链链轮是单切齿的双节距链轮。

R-Type Roller Chain Sprockets

The R-Type Roller Chain Sprockets are single-cut double pitch sprockets.



2042(t=7.2) P=25.4 b₁=7.85 Dr=15.88

单位(Dimension):mm

工作齿数 Working Teeth NO.	节径 Dp	外径 Do	测量距 Db or Dc	孔径 D		凸台 Hub		概重 Approx Weight (Kg)
				最小 Min	最大 Max	直径 d	总长 H	
10	82.20	93	66.32	19.1	35	56	40	0.85
11	90.16	102	73.36	19.1	35	56	40	0.91
12	98.14	110	82.26	19.1	35	56	40	0.97
13	106.14	118	89.48	19.1	35	56	40	1.05
14	114.15	127	98.27	19.1	35	56	40	1.12
15	122.17	135	105.62	19.1	42	65	40	1.43
16	130.20	143	114.32	19.1	42	65	40	1.52
18	146.27	159	130.39	19.1	42	65	40	1.72
20	162.37	176	146.49	19.1	46	70	40	2.21
24	194.60	208	178.72	25	50	75	45	2.97
25	202.66	216	186.38	25	50	75	50	3.12
26	210.72	224	194.84	25	50	75	50	3.26
28	226.86	241	210.98	25	50	75	50	3.58
30	243.00	257	227.12	25	50	75	50	3.91

2052(t=8.7) P=31.75 b₁=9.40 Dr=19.05

单位(Dimension):mm

工作齿数 Working Teeth NO.	节径 Dp	外径 Do	测量距 Db or Dc	孔径 D		凸台 Hub		概重 Approx Weight (Kg)
				最小 Min	最大 Max	直径 d	总长 H	
10	102.75	117	83.70	25.4	46	70	45	1.49
11	112.70	127	92.50	25.4	46	70	45	1.60
12	122.67	138	103.62	25.4	46	70	45	1.73
13	132.67	148	112.65	25.4	46	70	45	1.86
14	142.68	158	123.63	25.4	46	70	45	2.01
15	152.71	168	132.82	25.4	46	70	45	2.17
16	162.74	179	143.69	25.4	46	70	45	2.24
18	182.84	199	163.79	25.4	46	70	45	2.71
20	202.96	220	183.91	25.4	50	75	50	3.45
24	243.25	260	224.20	25	57	85	60	5.23
25	253.32	270	233.78	25	57	85	60	5.50
26	263.40	281	244.35	25	57	85	60	5.78
28	283.57	301	264.52	25	57	85	60	6.37
30	303.75	321	284.70	25	57	85	60	7.00

2062(t=11.7) P=38.10 b₁=12.57 Dr=22.23

单位(Dimension):mm

工作齿数 Working Teeth NO.	节径 Dp	外径 Do	测量距 Db or Dc	孔径 D		凸台 Hub		概重 Approx Weight (Kg)
				最小 Min	最大 Max	直径 d	总长 H	
10	123.30	140	101.07	25.4	52	80	45	2.23
11	135.24	153	111.63	25.4	52	80	45	2.45
12	147.21	165	124.98	25.4	52	80	45	2.70
13	159.20	177	135.81	25.4	52	80	45	2.97
14	171.22	190	148.99	25.4	52	80	45	3.25
15	183.25	202	160.02	25	57	85	50	3.94
16	195.29	214	173.06	25	57	85	50	4.27
18	219.41	239	197.18	25	57	85	55	5.19
20	243.55	263	221.32	25	57	85	55	6.00
24	291.90	312	269.67	25	57	85	55	7.87
25	303.99	324	281.16	25	57	85	55	8.39
26	316.09	337	293.86	25	57	85	55	8.93
28	340.29	361	318.06	25	63	95	65	11.10
30	364.50	385	342.27	25	63	95	65	12.30

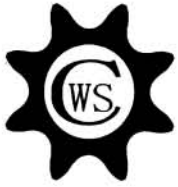
2082(t=14.6) P=50.8 b₁=15.75 Dr=28.58

单位(Dimension):mm

工作齿数 Working Teeth NO.	节径 Dp	外径 Do	测量距 Db or Dc	孔径 D		凸台 Hub		概重 Approx Weight (Kg)
				最小 Min	最大 Max	直径 d	总长 H	
10	164.39	187	135.81	25	63	95	65	4.90
11	180.31	204	149.90	25	63	95	65	5.48
12	196.28	220	167.70	25	63	95	65	6.02
13	212.27	237	182.14	25	63	95	65	6.61
14	228.30	253	199.72	25	63	95	65	7.25
15	244.33	269	214.42	25	63	95	65	7.93
16	260.39	286	231.81	25	63	95	65	8.66
18	292.55	319	263.97	25	72	105	75	11.50
20	324.74	351	296.16	25	72	105	75	13.30
24	389.19	416	360.61	25	72	105	75	17.50
25	405.32	433	375.94	25	72	105	75	18.60
26	421.45	449	392.87	25	72	105	75	19.80
28	453.72	481	425.14	25	78	115	85	23.90
30	485.99	514	457.41	25	78	115	85	26.70

- 注:
1. 底径用于偶数齿, 卡尺测量直径用于奇数齿。
 2. 阴影部分表示齿部淬火的库存链轮。
 3. P: 链条节距 b₁: 内链节内宽 Dr: 滚子直径

- NOTE:
1. Bottom diameter for even number of teeth, Caliper diameter for odd number of teeth.
 2. Shaded Zone is hardened teeth stock sprockets.
 3. P: Chain Pitch
b₁: Distance between inside links.
Dr: Roller diameter.



双节距链轮 DOUBLE-PITCH SPROCKETS

双节距滚子链链轮

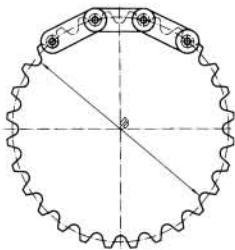
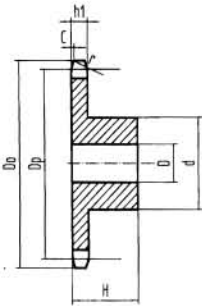
这种型号的链轮为双切齿的双节距链轮
此链轮齿数一定, 链轮没旋转一圈, 链条与相邻两齿中的一齿啮合, 此齿数定义为“工作齿数”。
在奇数齿情况下, 链轮转两圈, 使每个齿与链条啮合一次, 这样延长了链轮的寿命。

Double Pitch Roller Chain Sprockets

The type sprockets are double-cut double-pitch sprockets.

The number of teeth of the sprocket is determined so that the chain meshes with one of every two teeth of sprocket per turn of the sprocket. This number of teeth is termed "number of the working teeth."

In case of odd number of teeth, each tooth of the sprocket meshes with the chain per two turns of the sprocket, thus extending service life of the sprocket.



注:

1. 底径用于偶数齿, 卡尺测量直径用于奇数齿。
2. 阴影部分表示齿部淬火的库存链轮。
3. P: 链条节距 b_1 : 内链节内宽 Dr: 滚子直径

NOTE:

1. Bottom diameter for even number of teeth, Caliper diameter for odd number of teeth.
2. Shard Zone is hardened teeth stock sprockets.
3. P: Chain Pitch
 b_1 : Distance between inside links.
Dr: Roller diameter.

2040(t=7.2) P=25.4 $b_1=7.85$ Dr=7.95

单位(Dimension):mm

齿数 Teeth NO.	工作齿数 Working Teeth NO.	节径 Dp	外径 Do	测量距 Db or De	孔径 D		凸台 Hub		概重 Approx Weight (Kg)
					最小 Min	最大 Max	直径 d	总长 H	
15	7 ^{1/2}	62.45	67	54.16					
17	8 ^{1/2}	70.31	76	62.06					
18	9	74.26	80	66.31					
19	9 ^{1/2}	78.23	84	70.01	12.7	30	50	30	0.59
20	10	82.20	88	74.25	12.7	35	56	40	0.90
21	10 ^{1/2}	86.17	92	77.98	12.7	35	56	40	0.93
22	11	90.16	96	82.21	12.7	35	56	40	0.96
23	11 ^{1/2}	94.15	100	85.98	12.7	35	56	40	0.99
24	12	98.14	104	90.19	12.7	35	56	40	1.02
25	12 ^{1/2}	102.14	108	93.98	12.7	35	56	40	1.06
26	13	106.14	112	98.19	12.7	35	56	40	1.10
27	13 ^{1/2}	110.14	116	102.00	12.7	35	56	40	1.13
28	14	114.15	120	106.20	12.7	35	56	40	1.17
29	14 ^{1/2}	118.16	124	110.03	12.7	35	56	40	1.21

2050(t=8.7) P=31.75 $b_1=9.40$ Dr=10.16

单位(Dimension):mm

15	7 ^{1/2}	78.06	84	67.47					
17	8 ^{1/2}	87.89	94	77.36					
18	9	92.83	100	82.67					
19	9 ^{1/2}	97.78	105	87.29	12.7	42	65	40	1.29
20	10	102.75	110	92.59	19.1	46	70	45	1.56
21	10 ^{1/2}	107.72	115	97.26	19.1	46	70	45	1.62
22	11	112.70	120	102.54	19.1	46	70	45	1.68
23	11 ^{1/2}	117.68	125	107.25	19.1	46	70	45	1.74
24	12	122.67	130	112.51	19.1	46	70	45	1.80
25	12 ^{1/2}	127.67	135	117.26	19.1	46	70	45	1.87
26	13	132.67	140	122.51	19.1	46	70	45	1.94
27	13 ^{1/2}	137.67	145	127.28	19.1	46	70	45	2.01
28	14	142.68	150	132.52	19.1	46	70	45	2.09
29	14 ^{1/2}	147.69	155	137.32	19.1	46	70	45	2.16

2060(t=11.7) P=38.10 $b_1=12.57$ Dr=11.91

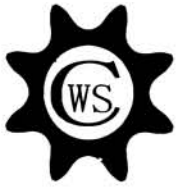
单位(Dimension):mm

15	7 ^{1/2}	93.67	101	81.25					
17	8 ^{1/2}	105.47	113	93.11					
18	9	111.40	119	99.49					
19	9 ^{1/2}	117.34	126	105.03	19.1	46	70	40	1.76
20	10	123.30	132	111.39	19.1	52	80	45	2.31
21	10 ^{1/2}	129.26	138	116.99	19.1	52	80	45	2.42
22	11	135.24	144	123.33	19.1	52	80	45	2.53
23	11 ^{1/2}	141.22	150	128.98	19.1	52	80	45	2.65
24	12	147.21	156	135.30	19.1	52	80	45	2.78
25	12 ^{1/2}	153.20	162	140.99	19.1	52	80	45	2.91
26	13	159.20	168	147.29	19.1	52	80	45	3.04
27	13 ^{1/2}	165.21	174	153.02	19.1	52	80	45	3.18
28	14	171.22	181	159.31	19.1	57	85	45	3.50
29	14 ^{1/2}	177.23	187	165.06	19.1	57	85	45	3.65

2080(t=14.6) P=50.8 $b_1=15.75$ Dr=15.88

单位(Dimension):mm

15	7 ^{1/2}	124.90	135	108.33					
17	8 ^{1/2}	140.62	151	124.15					
18	9	148.53	159	132.65					
19	9 ^{1/2}	156.45	167	140.04	25.4	60	90	50	3.77
20	10	164.39	176	148.51	25.4	60	90	60	4.46
21	10 ^{1/2}	172.34	184	155.99	25.4	60	90	60	4.70
22	11	180.31	192	164.43	25	60	92	59	5.02
23	11 ^{1/2}	188.29	200	171.97	25	60	92	59	5.28
24	12	196.28	208	180.40	25	60	92	59	5.56
25	12 ^{1/2}	204.27	216	187.99	25	60	92	59	5.85
26	13	212.27	224	196.39	25	60	92	59	6.15
27	13 ^{1/2}	220.28	233	204.03	25	60	92	59	6.46
28	14	228.30	241	212.42	25	60	92	59	6.78
29	14 ^{1/2}	236.31	249	220.09	25	60	92	59	7.12



CONVEYOR SPROCKETS

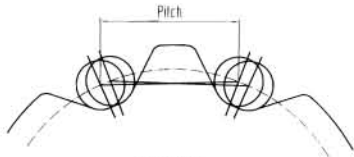
CWS标准输送链轮由火焰精密切割技术加工, CWS设计的特殊齿廓使滚子活动最小, 允许平滑正常的反方向运动, CWS标准输送链轮库存分A、B、C型, A型与专用凸台能很快焊接所需要型号链轮, 如需高强度, 高耐磨性链轮, 齿部能按要求进行热处理。

CWS Standard Conveyor Sprockets are manufactured by a precision flame-cutting technique. The special tooth profile designed by CWS minimizes the play of the roller and permits smooth normal and reverse action. CWS Standard Conveyor Sprockets are available in A, B and C types from stock. A standard or special hub can be easily welded to the sprocket. If large strength and/or high wear resistance is required, the teeth may be hardened on request.

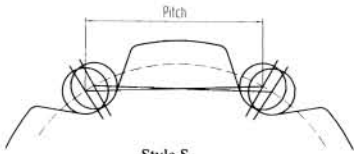


Style R.F

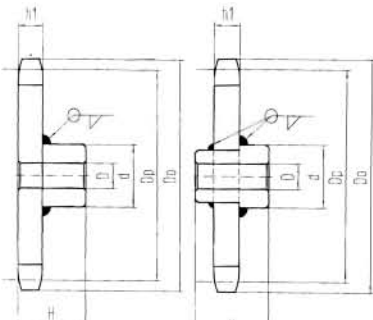
Style S



Style R.F



Style S



B型
Type B

C型
Type C

3075-S.R.F

单位(Dimension):mm

齿数 Teeth NO.	型式 Style	齿厚 Teeth Face (f)	外径 Do	节径 Dp	B型		Type B		孔径 D 最小 最大	概重 Weight Kg	C型		Type C		A型 Type A	
					直径 Dh	总长 L	直径 d	总长 H			孔径 D 最小 最大	概重 Weight kg	概重 Weight kg			
6	S	12	158	150.00	65	52	25	40	2.7	75	60	25	45	3.3	1.7	
	R	9	158			49			2.2	70	55	25	40	2.5	1.2	
	F	9	158			49			1.9	70	55	25	40	2.3	0.9	
7	S	12	183	172.86	70	57	25	45	3.6	85	70	25	50	4.8	2.3	
	R	9	184			54			3.0	75	60	25	45	3.4	1.7	
	F	9	184			54			2.6	75	60	25	45	3.0	1.3	
8	S	12	206	195.92	70	57	25	45	4.2	85	70	25	50	5.5	2.9	
	R	9	209			54			3.7	75	60	25	45	4.0	2.3	
	F	9	209			54			3.1	75	60	25	45	3.5	1.7	
9	S	12	229	219.30	75	62	25	50	5.3	85	70	25	50	6.2	3.6	
	R	9	234			59			4.7	85	70	25	50	5.6	3.0	
	F	9	234			59			4.0	85	70	25	50	5.0	2.3	
10	S	12	252	242.27	75	62	25	50	6.1	85	70	25	50	7.0	4.4	
	R	9	259			59			5.5	85	70	25	50	6.4	3.8	
	F	9	259			59			4.6	85	70	25	50	5.6	2.9	
11	S	12	276	266.24	75	62	25	50	7.0	85	70	25	50	7.9	5.3	
	R	9	283			59			6.4	85	70	25	50	7.2	4.7	
	F	9	283			59			5.2	85	70	25	50	6.2	3.5	
12	S	12	299	289.80	75	62	25	50	8.0	85	70	25	50	8.8	6.2	
	R	9	308			59			7.4	85	70	25	50	8.2	5.6	
	F	9	308			59			6.0	85	70	25	50	6.9	4.2	

3100-S.R.F

单位(Dimension):mm

6	S	12	210	200.00	70	57	25	45	4.40	75	60	25	45	4.7	3.1
	R	9	206			54			3.80	75	60	25	45	4.1	2.4
	F	9	206			54			3.20	75	60	25	45	3.6	1.8
7	S	12	240	230.48	75	62	25	50	5.80	85	70	25	50	6.6	4.0
	R	9	240			59			5.20	85	70	25	50	6.0	3.4
	F	9	240			59			4.30	85	70	25	50	5.3	2.6
8	S	12	269	261.23	75	62	25	50	6.80	85	70	25	50	7.7	5.1
	R	9	272			59			6.30	85	70	25	50	7.1	4.5
	F	9	272			59			5.10	85	70	25	50	6.1	3.4
9	S	12	302	292.40	75	62	25	50	8.20	85	70	25	50	9.0	6.4
	R	9	303			59			7.50	85	70	25	50	8.3	5.7
	F	9	303			59			6.00	85	70	25	50	7.0	4.3
10	S	12	333	323.62	75	62	25	50	9.60	85	70	25	50	10.4	7.9
	R	9	336			59			8.90	85	70	25	50	9.8	7.2
	F	9	336			59			7.10	85	70	25	50	8.1	5.4
11	S	12	365	354.99	85	67	25	55	11.90	90	75	25	50	12.6	9.5
	R	9	369			64			11.30	90	75	25	50	11.9	8.8
	F	9	369			64			9.10	90	75	25	50	9.9	6.6
12	S	12	396	386.40	85	67	25	55	13.70	90	75	25	55	14.4	11.2
	R	9	401			64			13.00	90	75	25	55	13.7	10.5
	F	9	401			64			10.30	90	75	25	55	11.2	7.9

5100-S.R.F

单位(Dimension):mm

6	S	16	212	200.00	90	76	25	60	7.00	100	80	30	60	7.9	4.0
	R	12	205			72			5.60	100	80	30	60	6.6	2.6
	F	12	205			72			5.00	100	80	30	60	6.2	2.0
7	S	16	244	230.48	100	81	30	65	9.40	110	90	30	70	10.8	5.3
	R	12	240			77			7.90	110	90	30	70	9.5	3.9
	F	12	240			77			7.00	110	90	30	70	8.8	3.0
8	S	16	273	261.23	100	81	30	65	10.70	110	90	30	70	12.2	6.7
	R	12	273			77			9.40	110	90	30	70	10.9	5.4
	F	12	273			77			8.00	110	90	30	70	9.8	4.0
9	S	16	306	292.40	100	81	30	65	12.50	110	90	30	70	14.1	8.5
	R	12	307			77			11.10	110	90	30	70	12.6	7.1
	F	12	307			77			9.30	110	90	30	70	11.1	5.3
10	S	16	337	323.62	100	81	30	65	14.40	110	90	30	70	16.0	10.4
	R	12	340			77			12.90	110	90	30	70	14.4	8.9
	F	12	340			77			10.70	110	90	30	70	12.5	6.7
11	S	16	368	354.99	110	91	30	75	18.10	120	100	30	75	20.0	12.5
	R	12	373			87			16.60	120	100	30	75	18.5	11.0
	F	12	373			87			13.80	120	100	30	75	16.1	8.3
12	S	16	400	386.40	110	91	30	75	20.50	120	100	30	75	22.3	14.9
	R	12	405			87			18.80	120	100	30	75	20.7	13.2
	F	12	405			87			15.50	120	100	30	75	17.7	9.9



CONVEYOR SPROCKETS

5150-S.R.F

单位(Dimension):mm

齿数 Teeth NO.	型式 Style	齿厚 Teeth Face (f)	外径 Do	节径 Dp	B型 Type B					C型 Type C				A型 Type A	
					直径 d	总长 H	孔径 D		概重 Weight Kg	直径 d	总长 H	孔径 D		概重 Weight kg	概重 Weight kg
							最小 Min	最大 Max				最小 Min	最大 Max		
6	S	16	310	300.00	100	81	30	65	13.0	110	90	30	70	14.5	9
	R	12	304		77	77	11.6	13.1	7.6						
7	S	16	359	345.72	110	91	30	75	17.8	120	100	35	75	19.6	12.2
	R	12	352						87					16.1	17.9
8	S	16	405	391.85	110	91	30	75	21.2	120	100	35	75	23.0	15.6
	R	12	402						87					19.5	21.4
9	S	16	452	438.60	120	96	35	80	26.6	130	105	35	80	28.7	19.5
	R	12	450						92					24.8	27.0
10	S	16	499	485.44	120	96	35	80	30.9	130	105	35	80	33.1	23.8
	R	12	499						92					29.3	31.5
11	S	16	543	532.48	130	101	35	85	37.1	140	115	40	90	40.2	28.2
	R	12	548						97					35.8	38.9
12	S	16	592	579.60	130	101	35	85	42.5	140	115	40	90	45.6	33.7
	R	12	596						97					40.9	44.0
	F	12						32.9						36.5	24.1

7100-S.R.F

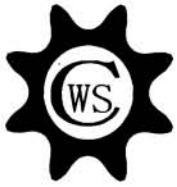
单位(Dimension):mm

齿数 Teeth NO.	型式 Style	齿厚 Teeth Face (f)	外径 Do	节径 Dp	直径 d	总长 H	最小 Min	最大 Max	概重 Weight Kg	直径 d	总长 H	最小 Min	最大 Max	概重 Weight kg	概重 Weight kg																
																6	S	19	214	200.00	100	81	30	65	8.70	110	90	30	70	10.1	4.9
																	R	12	210						73					7.00	8.4
7	S	19	242	230.48	110	91	30	75	11.70	120	100	35	75	13.5	6.4																
	R	12	243						83					10.00	11.8	4.7															
8	S	19	276	261.23	110	91	30	75	13.70	120	100	35	75	15.5	8.4																
	R	12	276						83					11.70	13.5	6.4															
9	S	19	308	292.40	120	101	35	80	17.70	130	110	35	80	20.0	10.6																
	R	12	310						93					15.70	17.9	8.5															
10	S	19	339	323.62	120	101	35	80	20.10	130	110	35	80	22.3	13.0																
	R	12	343						93					18.00	20.2	10.8															
11	S	19	370	354.99	130	111	35	85	25.00	140	120	40	90	27.6	15.5																
	R	12	376						103					22.80	25.4	13.4															
12	S	19	402	386.40	130	111	35	85	28.00	140	120	40	90	30.6	18.5																
	R	12	408						103					25.60	28.2	16.1															
	F	12						19.10						22.7	9.7																

10100-S.R.F

单位(Dimension):mm

齿数 Teeth NO.	型式 Style	齿厚 Teeth Face (f)	外径 Do	节径 Dp	直径 d	总长 H	最小 Min	最大 Max	概重 Weight Kg	直径 d	总长 H	最小 Min	最大 Max	概重 Weight kg	概重 Weight kg																
																6	S	22	217	200.00	110	97	30	75	10.90	120	100	35	75	12.2	5.3
																	R	16	214						91					8.60	9.9
7	S	22	248	230.48	110	97	30	75	12.70	120	100	35	75	14.0	7.1																
	R	16	248						91					10.10	11.5	4.6															
8	S	22	279	261.23	110	97	30	75	14.70	120	100	35	75	16.1	9.7																
	R	16	282						91					12.10	13.4	6.5															
9	S	22	310	292.40	120	102	35	80	18.50	130	105	35	80	20.1	11.4																
	R	16	316						91					15.80	17.3	8.7															
10	S	22	341	323.62	120	102	35	80	21.10	130	105	35	80	22.7	14.0																
	R	16	349						96					18.20	19.8	11.1															
11	S	22	372	354.99	130	107	35	85	25.70	140	115	40	90	28.1	16.8																
	R	16	382						101					22.70	25.1	13.9															
12	S	22	404	386.40	130	107	35	85	28.90	140	115	40	90	31.3	20.0																
	R	16	414						101					25.60	28.0	16.8															
	F	16						21.10						24.2	12.2																



CONVEYOR SPROCKETS

10150-S.R.F

单位(Dimension):mm

齿数 Teeth NO.	型式 Style	齿厚 Teeth Foace (f)	外径 Do	节径 Dp	B型 Type B				C型 Type C				A型 Type A		
					直径 d	总长 H	孔径 D 最小 Min 最大 Max		概重 Weight Kg	直径 d	总长 H	孔径 D 最小 Min 最大 Max		概重 Weight kg	概重 Weight kg
6	S	22	316	300.00	120	102	35	80	19.6	130	105	35	80	21.1	12.5
	R	16	309						16.8					18.3	9.7
7	S	22	363	345.72	130	107	35	85	25.5	140	115	40	90	27.9	16.6
	R	16	359						22.6					24.9	13.7
8	S	22	409	391.85	130	107	35	85	30.1	140	115	40	90	32.5	21.3
	R	16	408						27.1					29.5	18.3
9	S	22	456	438.60	140	117	40	95	38.9	150	125	40	100	35.3	26.6
	R	16	453						34.5					37.3	23
10	S	22	503	485.44	140	117	40	95	44.0	150	125	40	100	46.8	32.6
	R	16	506						40.8					43.6	29.3
11	S	22	550	532.48	150	122	40	100	53.1	150	125	40	100	53.6	39.3
	R	16	552						49.8					50.2	35.9
12	S	22	597	579.60	150	122	40	100	60.1	150	125	40	100	60.5	46.2
	R	16	601						56.4					56.8	42.5
	F	16				116			44.8					46.1	30.9

430-S.R.F

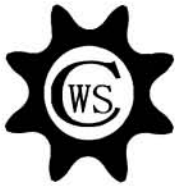
单位(Dimension):mm

6	S	16	215	203.20	85	71	25	55	6.6	90	75	25	55	7.1	4.2
	R		211						5.5					6.0	3.0
7	S	16	246	234.21	90	76	25	60	8.5	100	80	30	60	9.4	5.5
	R		246						7.4					8.3	4.4
8	S	16	277	265.41	90	76	25	60	10.0	100	80	30	60	11.0	7.1
	R		277						8.8					9.7	5.8
9	S	16	309	297.08	100	81	30	65	12.8	110	90	30	70	14.4	9.8
	R		311						11.5					13.0	7.5
10	S	16	341	328.80	100	81	30	65	14.8	110	90	30	70	16.3	10.8
	R		345						13.5					15.0	9.5
11	S	16	373	360.67	100	81	30	65	17.0	110	90	30	70	18.5	13.0
	R		378						15.6					17.1	11.6
12	S	16	405	392.58	100	81	30	65	19.4	110	90	30	70	20.9	15.4
	R		411						18.0					19.5	14.0

450-S.R.F

单位(Dimension):mm

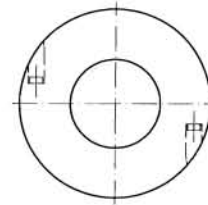
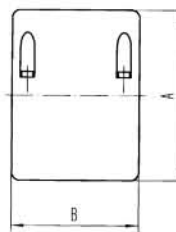
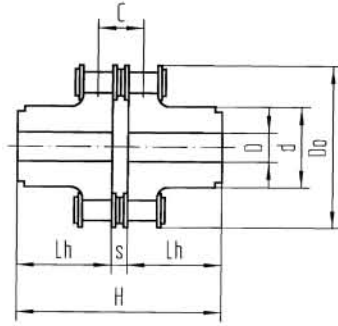
6	S	19	217	203.20	90	79	25	60	7.9	100	80	30	60	8.7	4.9
	R		217						6.4					7.1	3.4
7	S	19	248	234.21	100	84	30	65	10.6	110	90	30	70	11.8	6.6
	R		252						9.0					10.3	5.0
8	S	19	279	265.41	100	84	30	65	12.4	110	90	30	70	13.7	8.4
	R		286						10.8					12.1	6.6
9	S	19	310	297.08	110	94	30	75	16.0	120	100	35	75	17.6	10.4
	R		320						14.4					16.0	8.8
10	S	19	342	328.80	110	94	30	75	18.4	120	100	35	75	20.0	12.8
	R		354						16.8					18.4	11.2
11	S	19	374	360.67	110	94	30	75	21.0	120	100	35	75	22.6	15.4
	R		387						19.3					20.9	13.7
12	S	19	406	392.58	100	94	30	75	23.8	120	100	35	75	25.4	18.2
	R		419						21.9					23.5	16.4
	F	16				91			19.4					21.2	13.8



CHAIN COUPLINGS

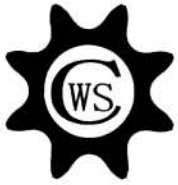
CWS链条联轴器由双排滚子链条和两只链轮组成。结构简单紧凑、传动能力强、经久耐用。另外，链条联轴器拆装方便。联轴器壳的使用更提高了其安全和耐用性能。

The CWS chain coupling, composed of two-strand roller chains and two sprockets, features simple and compact structure, and high flexibility, power transmission capability. What's more, the chain coupling allows simple connection disconnection, and the use of the housing enhances more safety and durability.

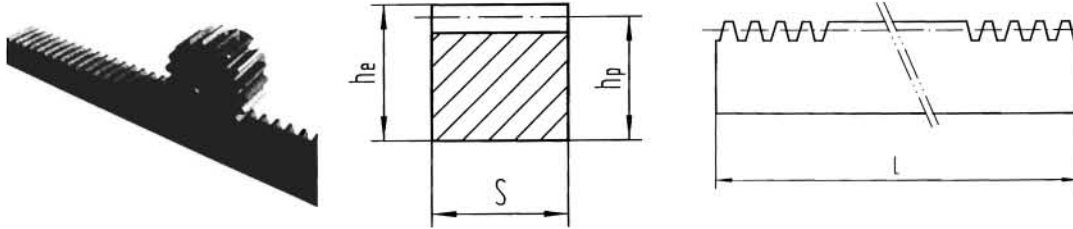


单位(Dimensions):mm

联轴器号 Coupling NO.	链条节距 Chain Pitch	库存孔径 Stock hole Dia.	联轴器 Coupling								壳 Casing			
			轴径 Shaft Dia.		外径 Do	总长 H	凸台直径 d	L _h	S	C	概重 Approx Weight (Kg)	A	B	概重 Approx Weight (Kg)
			最小 Min	最大 Max										
3012	9.525	12	13.5	16	45	65	27.2	29.5	6.0	10.1	0.31	69	63	0.22
4012		12	14	22	62	79.4	36	36			0.73	77	72	0.30
4014	12.7	12	14	28	69	79.4	45	36	7.4	14.4	1.12	84	75	0.31
4016		13.5	16	32	77	87.4	51.5	40			1.50	92	72	0.35
5014		14.5	17	35	86	99.7	56	45			2.15	101	85	0.47
5016	15.875	14.5	18	40	96	99.7	64	45	9.7	18.1	2.75	110	87	0.5
5018		16	18	45	106	99.7	73.5	45			3.60	122	85	0.6
6018		20	22	56	127	123.5	89.5	56			6.55	147	105	1.2
6020	19.05	20	24	60	139	123.5	102.5	56	11.5	22.8	8.38	158	105	1.2
6022		20	28	71	151	123.5	115	56			10.4	168	117	1.2
8018		20	32	80	169	141.2	115	63			13.2	190	129	1.9
8020	20.40	20	36	90	185	145.2	125	65	15.2	29.3	16.2	210	137	2.5
8022		20	40	100	2020	157.2	142	71			21.8	226	137	2.7
10020	31.75	25	45	110	233	178.8	162	80	18.8	35.8	32.4	281	153	4.1
12018	38.10	35	50	125	256	202.7	173	90	22.7	45.4	43.2	307	181	5.2
12022		35	56	140	304	222.7	213	100			69.1	357	181	6.7



MACHINED GEAR RACK



压力角(Pressure angle) 20° 材质(Material) C45

模数 Mod.	节线高 hp	截面高×截面宽 hexS	名义尺寸 L								
			500			1000			2000		
			齿数 Teeth NO.	总长 Lr	重量 Weight(Kg)	齿数 Teeth NO.	总长 Lr	重量 Weight(Kg)	齿数 Teeth NO.	总长 Lr	重量 Weight(Kg)
1	14	15×15	159	449.51	0.820	318	999.02	1.500	636	1998.05	3.100
1.5	15.5	17×17	106	449.51	1.000	212	999.02	2.000	424	1998.05	4.000
2	18	20×20	80	502.65	1.400	159	999.02	2.700	318	1998.05	5.400
2.5	22.5	25×25	64	502.65	2.100	127	997.45	4.300	255	2002.77	8.600
3	27	30×30	53	499.51	3.100	106	999.02	6.300	212	1998.05	12.500
4	21	25×25	40	502.65	1.800	80	1005.31	3.650	159	1998.05	7.300
4	26	30×30	40	502.65	3.050	80	1005.31	6.000	159	1998.05	11.900
4	36	40×40	40	502.65	5.500	80	1005.31	11.100	159	1998.05	22.000
5	45	50×50	32	502.65	8.300	64	1005.31	17.500	128	2010.31	34.600
6	54	60×60	27	508.93	12.650	53	999.02	25.000	106	1998.05	51.000
8	72	80×80	20	502.65	21.400	40	1005.31	42.700	80	2010.62	85.400

注:

单节距公差为 $\pm 20 \mu m$

500mm以上节距等级符合DIN3962/63/67标准的8至9级

直齿齿条

NOTE:

Tolerance on single pitch $\pm 20 \mu m$

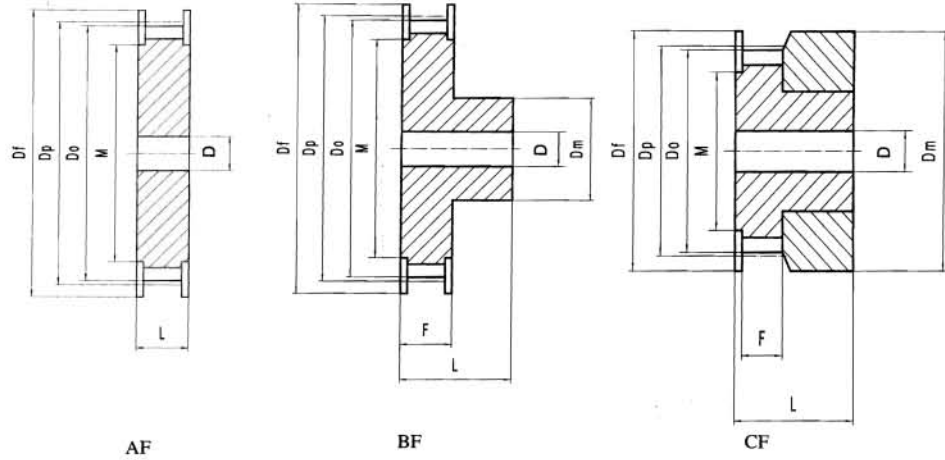
Tolerance on sum of pitches $\pm 30 \mu m$ on 500 mm

The quality grade of the tothing is from 8 to 9 at DIN 3962/63/67

Straight tothing



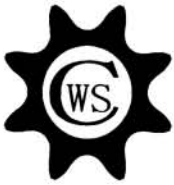
TIMING BELT PULLEYS



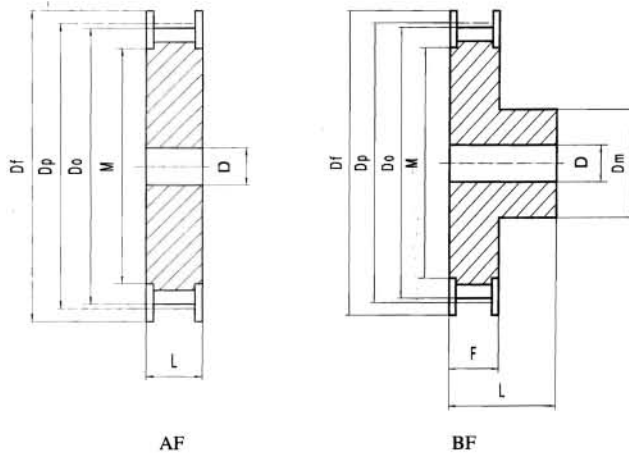
XL037 W:11 H:2.0

单位(Dimensions):mm 材质(Material):C45

齿数 Teeth NO.	形式 Type	节径 Dp	外径 Do	齿宽 F	总长 L	凸台直径 Dm	孔径 D		挡圈直径 Df	底径 M	概重 Weight (kg)	
							最小 min	最大 max			AF	BF
10	CF	16.17	15.66	—	—	23	4	8	23	12	0.041	
11		17.79	17.28	—	—	25	5	9	25	13	0.048	
12		19.40	18.90	—	—	25	6	10	25	14	0.051	
14		22.64	22.13	—	—	28	6	14	28	18	0.068	
15		24.25	23.75	—	—	28	6	14	28	18	0.072	
16	BF	25.87	25.36	15	23	17	6	10	31	20	0.055	
18		29.11	28.60	15	23	19	6	12	33	22	0.071	
19		30.72	30.22	15	23	19	6	12	35	22	0.078	
20		32.34	31.83	15	23	22	8	14	38	26	0.088	
21		33.96	33.45	15	23	22	8	14	38	26	0.096	
22		35.57	35.07	15	23	24	8	16	43	28	0.108	
24		38.81	38.30	15	23	27	8	18	44	32	0.132	
25		40.43	39.92	15	23	28	8	19	44	32	0.144	
26		42.04	41.53	15	23	29	8	20	47	34	0.157	
28		45.28	44.77	15	23	30	8	21	48	36	0.180	
30	48.51	48.00	15	23	33	10	24	55	39	0.208		
32	AF,BF	51.74	51.24	15	25	38	10	26	57	41	0.216	0.304
34		54.98	54.47	15	25	38	10	26	61	41	0.246	0.335
36		58.21	57.70	15	25	38	10	26	61	41	0.279	0.367
38		61.45	60.94	15	25	38	10	26	65	50	0.313	0.402
40		64.68	64.17	15	25	38	10	26	69	50	0.350	0.438
42		67.91	67.41	15	25	38	10	26	74	53	0.388	0.476
44		71.15	70.64	15	25	38	10	26	78	58	0.428	0.517
46		74.38	73.87	15	25	38	10	26	83	63	0.467	0.555



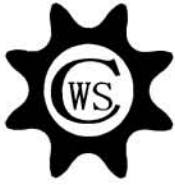
TIMING BELT PULLEYS



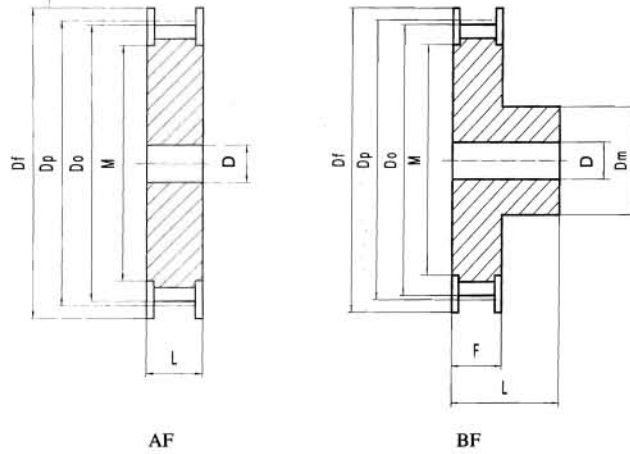
L050 W:14 H:2.5

单位(Dimensions):mm 材质(Material):C45

齿数 Teeth NO.	形式 Type	节径 Dp	外径 Do	齿宽 F	总长 L	凸台直径 Dm	孔径 D		挡圈直径 Df	底径 M	概重 Weight (kg)	
							最小 min	最大 max			AF	BF
14		42.45	41.68	19	31	30	10	20	47	34	0.17	0.29
15	AF,BF	45.48	44.72	19	31	32	10	20	51	36	0.20	0.34
16		48.51	47.75	19	31	34	12	22	55	39	0.23	0.38
17		51.54	50.78	19	31	35	12	22	57	41	0.26	0.43
18		54.57	53.81	19	31	36	12	24	61	41	0.30	0.47
19	AF,BF	57.61	56.84	19	31	38	12	24	65	50	0.33	0.53
20		60.64	59.88	19	31	40	12	26	65	50	0.37	0.59
21		63.67	62.91	19	31	42	12	26	69	50	0.42	0.66
22		66.70	65.94	19	31	44	12	28	74	53	0.46	0.72
24		72.77	72.00	19	31	44	12	28	78	58	0.55	0.82
25	AF,BF	75.80	75.04	19	31	44	12	28	83	63	0.60	0.87
26		78.83	78.07	19	31	44	12	28	86	66	0.66	0.92
28		84.89	84.13	19	31	50	12	30	93	75	0.77	1.11
30		90.96	90.20	19	31	50	12	30	99	78	0.89	1.23
32		97.02	96.26	19	34	50	16	30	105	84	1.01	1.38
34	AF,BF	103.08	102.32	19	34	56	16	32	112	90	1.14	1.62
36		109.15	108.39	19	34	56	16	32	115	90	1.29	1.77
38		115.21	114.45	19	34	60	16	34	126	100	1.42	1.97
40		121.28	120.51	19	34	60	16	34	126	100	1.61	2.16
42	AF,BF	127.34	126.58	19	34	60	16	34	131	101	1.78	2.33
44		133.40	132.64	19	39	65	16	38	138	125	1.96	2.73



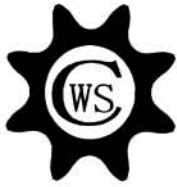
TIMING BELT PULLEYS



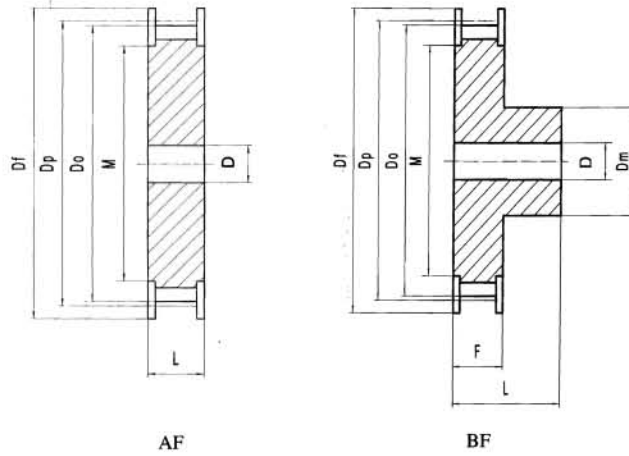
L075 W:21 H:2.5

单位(Dimensions):mm 材质(Material):C45

齿数 Teeth NO.	形式 Type	节径 Dp	外径 Do	齿宽 F	总长 L	凸台直径 Dm	孔径 D		挡圈直径 Df	底径 M	概重 Weight (kg)	
							最小 min	最大 max			AF	BF
15		45.48	44.72	26	38	32	10	20	51	36	0.28	0.45
16	AF,BF	48.51	47.75	26	38	34	12	22	55	39	0.31	0.50
17		51.54	50.78	26	38	35	12	22	57	41	0.36	0.56
18		54.57	53.81	26	38	36	12	24	61	41	0.41	0.62
19		57.61	56.84	26	38	38	12	24	65	50	0.46	0.70
20	AF,BF	60.64	59.88	26	38	40	12	26	65	50	0.51	0.78
21		63.67	62.91	26	38	42	12	26	69	50	0.57	0.86
22		66.70	65.94	26	38	44	12	28	74	53	0.63	0.95
24		72.77	72.00	26	38	44	12	28	78	58	0.76	1.08
25		75.80	75.04	26	38	44	12	28	83	63	0.83	1.15
26	AF,BF	78.83	78.07	26	38	44	12	28	86	66	0.90	1.22
28		84.89	84.13	26	38	50	12	30	93	75	1.05	1.47
30		90.96	90.20	26	38	50	12	30	99	78	1.22	1.64
32		97.02	96.26	26	41	50	16	30	105	84	1.38	1.83
34		103.08	102.32	26	41	56	16	32	112	90	1.56	2.14
36	AF,BF	109.15	108.39	26	41	56	16	32	115	90	1.76	2.34
38		115.21	114.45	26	41	60	16	34	126	100	1.96	2.51
40		121.28	120.51	26	41	60	16	34	126	100	2.20	2.86
42	AF,BF	127.34	126.58	26	41	60	16	34	131	101	2.43	3.09
44		133.40	132.64	26	46	65	16	38	138	125	2.68	3.58



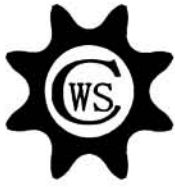
TIMING BELT PULLEYS



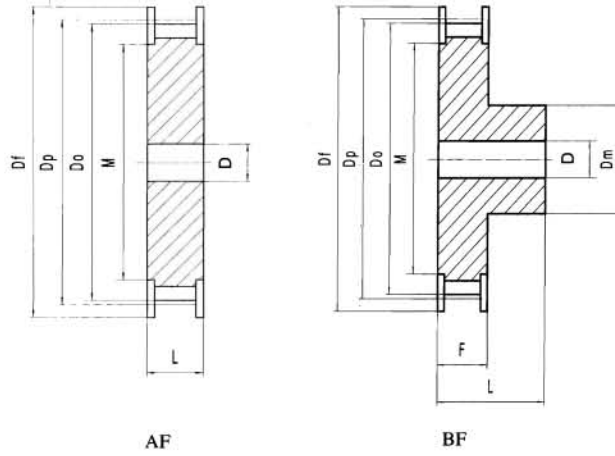
L100 W:28 H:2.5

单位(Dimensions):mm 材质(Material):C45

齿数 Teeth NO.	形式 Type	节径 Dp	外径 Do	齿宽 F	总长 L	凸台直径 Dm	孔径 D		挡圈直径 Df	底径 M	概重 Weight (kg)	
							最小 min	最大 max			AF	BF
16		48.51	47.75	33	45	34	12	22	55	39	0.40	0.63
17	AF,BF	51.54	50.78	33	45	35	12	22	57	41	0.45	0.70
18		54.57	53.81	33	45	36	12	24	61	41	0.52	0.78
19		57.61	56.84	33	45	38	12	24	65	50	0.58	0.87
20		60.64	59.88	33	45	40	12	26	65	50	0.65	0.97
21	AF,BF	63.67	62.91	33	45	42	12	26	69	50	0.72	1.08
22		66.70	65.94	33	45	44	12	28	74	53	0.80	1.19
24		72.77	72.00	33	45	44	12	28	78	58	0.96	1.36
25		75.80	75.04	33	45	44	12	28	83	63	1.05	1.44
26		78.83	78.07	33	45	44	12	28	86	66	1.14	1.54
28	AF,BF	84.89	84.13	33	45	50	12	30	93	75	1.33	1.85
30		90.96	90.20	33	45	50	12	30	99	78	1.54	2.06
32		97.02	96.26	33	48	50	16	30	105	84	1.75	2.29
34		103.08	102.32	33	48	56	16	32	112	90	1.98	2.67
36		109.15	108.39	33	48	56	16	32	115	90	2.24	2.93
38	AF,BF	115.21	114.45	33	48	60	16	34	126	100	2.50	3.05
40		121.28	120.51	33	48	60	16	34	126	100	2.79	3.58
42		127.41	126.58	33	48	60	16	34	131	101	3.09	3.88
44		133.40	132.64	33	53	65	16	38	138	125	3.40	4.46



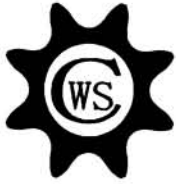
TIMING BELT PULLEYS



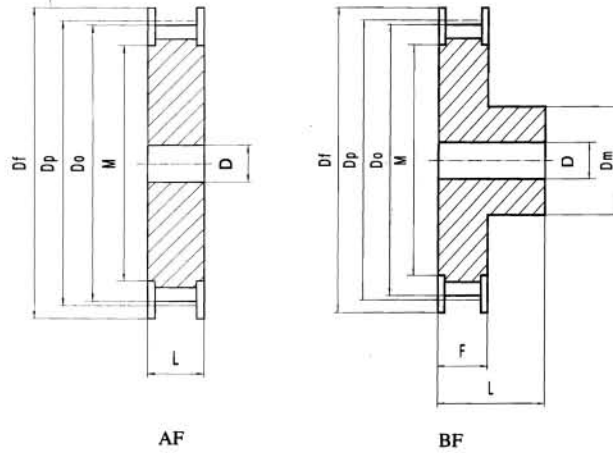
H100 W:28 H:2.5

单位(Dimensions):mm 材质(Material):C45

齿数 Teeth NO.	形式 Type	节径 Dp	外径 Do	齿宽 F	总长 L	凸台直径 Dm	孔径 D		挡圈直径 Df	底径 M	概重 Weight (kg)		
							最小 min	最大 max			AF	BF	
14	AF,BF	56.60	55.22	33	48	38	14	26	61	41	0.51	0.63	
15		60.64	59.27	33	48	46	16	30	65	50	0.59	0.76	
16		64.68	63.31	33	48	46	16	30	69	50	0.68	0.85	
18		72.77	71.39	33	48	54	16	36	78	58	0.89	1.14	
19		76.81	75.44	33	48	55	16	36	83	63	1.01	1.26	
20		80.85	79.48	33	48	56	16	38	86	66	1.13	1.40	
21		84.89	83.52	33	48	58	16	38	90	73	1.26	1.54	
22	AF,BF	88.94	87.56	33	48	58	16	38	93	75	1.39	1.68	
24		97.02	95.65	33	48	62	20	38	105	84	1.65	1.97	
25		101.06	99.69	33	48	66	20	40	108	84	1.81	2.17	
26		105.11	103.73	33	48	70	20	40	112	90	1.97	2.38	
28		113.19	111.82	33	48	74	20	42	118	90	2.31	2.73	
30		AF,BF	121.28	119.90	33	48	74	20	42	126	100	2.68	3.10
32			129.36	127.99	33	53	78	20	45	136	118	3.08	3.77
34	137.45		136.07	33	53	82	20	45	146	128	3.50	4.27	
36	AF,BF	145.53	144.16	33	53	82	20	48	152	134	3.95	4.72	
38		153.62	152.24	33	53	82	20	52	159	141	4.46	5.37	
40		161.70	160.33	33	53	88	20	52	168	150	4.92	5.82	



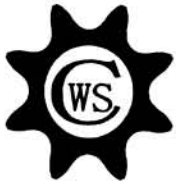
TIMING BELT PULLEYS



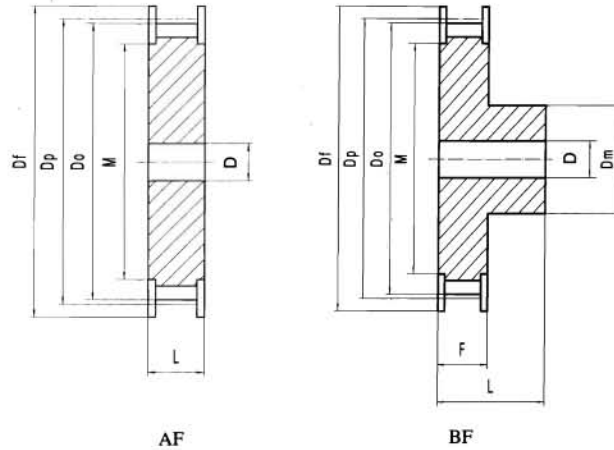
H150 WI:40 H:2.5

单位(Dimensions):mm 材质(Material):C45

齿数 Teeth NO.	形式 Type	节径 Dp	外径 Do	齿宽 F	总长 L	凸台直径 Dm	孔径 D		挡圈直径 Df	底径 M	概重 Weight (kg)	
							最小 min	最大 max			AF	BF
15	AF,BF	60.64	59.27	45	60	46	16	30	65	50	0.80	0.97
16		64.68	63.31	45	60	46	16	30	69	50	0.93	1.10
18		72.77	71.39	45	60	54	16	36	78	58	1.22	1.46
19		76.81	75.44	45	60	55	16	36	83	63	1.28	1.63
20		80.85	79.48	45	60	56	16	38	86	66	1.54	1.81
21	AF,BF	84.89	83.52	45	60	58	16	38	90	73	1.72	2.00
22		88.94	87.56	45	60	58	16	38	93	75	1.90	2.19
24		97.02	95.65	45	60	62	20	38	105	84	2.26	2.57
25		101.06	99.69	45	60	66	20	40	108	84	2.47	2.83
26		105.11	103.73	45	60	70	20	40	112	90	2.69	3.10
28	AF,BF	113.19	111.82	45	60	74	20	42	118	90	3.15	3.62
30		121.28	119.90	45	60	74	20	42	126	100	3.66	4.12
32		129.36	127.99	45	65	78	20	45	136	118	4.20	4.89
34		137.45	136.07	45	65	82	20	45	146	128	4.77	5.55
36		145.53	144.16	45	65	82	20	48	152	134	5.38	6.16
38	AF,BF	153.62	152.24	45	65	88	20	52	159	141	6.13	7.04
40		161.70	160.33	45	65	88	20	52	168	150	6.71	7.61



TIMING BELT PULLEYS



H200 W:54 H:2.5

单位(Dimensions):mm 材质(Material):C45

齿数 Teeth NO.	形式 Type	节径 Dp	外径 Do	齿宽 F	总长 L	凸台直径 Dm	孔径 D		挡圈直径 Df	底径 M	概重 Weight (kg)	
							最小 min	最大 max			AF	BF
16	AF,BF	64.68	63.31	59	74	46	16	30	69	50	1.22	1.39
18		72.77	71.39	59	74	54	16	36	78	58	1.60	1.84
19		76.81	75.44	59	74	55	16	36	83	63	1.80	2.06
20		80.85	79.48	59	74	60	20	40	86	66	1.97	2.26
21		84.89	83.52	59	74	65	20	42	90	73	2.20	2.55
22	AF,BF	88.94	87.56	59	74	70	20	46	93	75	2.44	2.85
24		97.02	95.65	59	74	74	20	48	105	84	2.96	3.42
25		101.06	99.69	59	74	74	25	50	108	84	3.15	3.60
26		105.11	103.73	59	74	78	25	50	112	90	3.44	3.94
28		113.19	111.82	59	74	78	25	52	118	90	4.05	4.56
30	AF,BF	121.28	119.90	59	74	86	25	54	126	100	4.71	5.34
32		129.36	127.99	59	79	92	25	54	136	118	5.42	6.38
34		137.45	136.07	59	79	98	25	56	146	128	6.17	7.27
36		145.53	144.16	59	79	98	25	58	152	134	6.98	8.08
38		AF,BF	153.62	152.24	59	79	104	30	65	159	141	7.31
40	161.70		160.33	59	79	104	30	65	168	150	8.62	9.84